



Department of Nursing

Nursing Student Handbook  
Four Year BSN Program

## Table of Contents

MESSAGE FROM THE NURSING PROGRAM DIRECTOR.....	3
CONTACT INFORMATION .....	4
Adams State College Mission .....	5
Bachelor of Science in Nursing (BSN) Mission .....	5
Adams State College Institutional Goals.....	5
Adams State College Vision Statement.....	5
Adams State College Four Year Baccalaureate Program Goals .....	5
Program Goals .....	6
Philosophy of Adams State College Department of Nursing.....	7
<b>ANA CODE OF ETHICS</b> .....	8
Florence Nightingale Pledge .....	9
ASC Nursing Organizational Chart.....	10
Bachelor of Science Nursing Curriculum = 124 TCH .....	11
BSN Course Descriptions.....	12
STUDENT GOALS AND LEARNING OUTCOMES .....	18
Academic Information.....	25
Advisement.....	25
Admission to the Nursing Program .....	25
Admission Requirements: .....	25
Scholastic Requirements .....	26
Additions, Withdrawals and Drops .....	27
Transfer Credits .....	27
Transferring Credits .....	27
Program Completion Requirements for the BSN Program .....	28
Writing Assessment.....	28
Technology Proficiency .....	28
Classroom/Clinical Attendance.....	28
ASC Excused Absence Notification Policy: .....	28
Classroom/Clinical Behavior .....	30
Academic Conduct .....	30
Cell Phones.....	31
Dress Code .....	31
Probation .....	31
Academic Appeals Procedure .....	31
Discrimination and Sexual Harassment .....	31
Disability Services.....	32
Student Policies and Standards.....	32
Technical Standards .....	32
Clinical Manuals.....	33
Unusual Occurrence .....	33
Background Checks.....	34
ASC Nursing Program Substance Abuse Policy .....	36
Disciplinary Philosophy .....	37
Right to Report .....	37
Due Process Procedure.....	37

## **MESSAGE FROM THE NURSING PROGRAM DIRECTOR**

Director of Nursing Education Program

Adams State College

Dear ASC Baccalaureate Nursing Students,

Welcome to the four year BSN Baccalaureate Nursing Program. We are delighted you have chosen ASC for your educational program and look forward to working with you as you progress through the BSN curriculum.

Our program is based on Colorado Nursing rules and regulations and *The Baccalaureate Essentials year 2008* published by the American Association of Colleges of Nursing in the U.S. The nursing program has a strong focus on cultural diversity, community service, evidence-based nursing, and rural health care.

The atmosphere of the ASC nursing program is student friendly. With a low student to faculty ratio, students receive personal advisement and instruction from faculty members who know them by name. Students are considered partners and colleagues in the teaching/learning process.

The nursing faculty are from a variety of nursing practice backgrounds. This assures students will receive a well-rounded nursing education experience at ASC. You can expect a faculty with a sincere concern for the learning needs of nursing students and who endeavor to prepare the highest level professional nurse.

Again, welcome to the ASC Nursing program.

Aida Sahud, Dr.P.H., MSN, MPH, RN

Director of Nursing Education Program

Adams State College

## CONTACT INFORMATION

Director of Nursing:  
Aida Sahud DR. P.H. RN MSN MPH

Office: Richardson Hall Room 302  
E-mail: [aidasahud@adams.edu](mailto:aidasahud@adams.edu)  
Phone: 719-587-8134  
Fax: 719-587-7522

Administrative Assistant:  
Carol Otto (on family medical leave)  
208 Edgemont Blvd.  
Alamosa, CO 81102

Temporary Administrative Assistant:  
Regina Rice  
Office: Richardson Hall Room 302  
E-mail: [rrice@adams.edu](mailto:rrice@adams.edu)  
Phone: 719-587-8258  
Fax: 719-587-7522

### Faculty:

Sharon Melvin RN CCRN MSN  
208 Edgemont Blvd.  
Alamosa, CO 81102

Office: Richardson Hall Room 230  
E-mail: [smelvin@adams.edu](mailto:smelvin@adams.edu)  
Phone: 719-587-8114  
Fax: 719-587-7522

Elaine Regan RN CNM SANE-A CFN  
CHES MS MSN  
208 Edgemont Blvd  
Alamosa, CO 81102

Office: Richardson Hall Room 230  
Email: [elaineregan@adams.edu](mailto:elaineregan@adams.edu)  
Phone: 719-587-8170  
Fax: 719-587-7522

### Faculty on Educational Leave:

Amanda Jojola RN FNP MSN  
Phone: 719-587-8171 (Nursing Office)  
Fax: 719-587-7522

Shawn Elliott RN MSN CNS  
Phone: 719-587-8171 (Nursing Office)  
Fax: 719-587-7522

## **Adams State College Mission**

Adams State College dedicates its resources to provide opportunity and access for all students. The College is an innovative leader that recognizes the inherent educational value of diversity. It is a catalyst for the educational, cultural, and economic interests of rural Colorado, the surrounding region, and the global community.

## **Bachelor of Science in Nursing (BSN) Mission**

The Department of Nursing shares the mission of Adams State College. In keeping with this mission, the Nursing Program is committed to a baccalaureate nursing education based on professional nursing standards with a focus on cultural diversity, community service, and rural health care.

## **Adams State College Institutional Goals**

- Promote academic excellence.
- Cultivate a high-quality, student-centered environment.
- Provide educational access and opportunity for success.
- Preserve and promote the unique history and culture of the region.
- Stimulate economic development in the San Luis Valley.
- Improve organization effectiveness.
- Build financial stability.

## **Adams State College Vision Statement**

We measure our success by the success of our students in achieving their life goals. We are Colorado's most effective state-assisted four-year college. Our efforts provide a high quality educational experience through a supportive and rigorous learning environment. Our programs recognize the value of continual improvement while embracing diversity of culture and ideas that stimulate intellectual growth.

## **Adams State College Four Year Baccalaureate Program Goals**

- Advance the education of the nursing student to the baccalaureate level of education based on professional nursing standards and guidelines.
- Provide access for students in the surrounding geographic region an opportunity for a baccalaureate in nursing education.
- Prepare nursing students to address the health care needs of rural and culturally diverse populations.
- Graduate baccalaureate level nurses who are prepared to provide service to individuals, families, and communities.

## Program Goals

The Department of Nursing at Adams State College strives to:

- 1) Provide the Baccalaureate Nursing (BSN) student with academic excellence, a well-rounded liberal arts education and the tools necessary to pass the NCLEX -RN
- 2) Assist the student to appreciate and value the cultural diversity of the San Luis Valley and recognize the importance of cultural humility, spirituality, compassion and caring in the provision of nursing care
- 3) Promote the development of critical thinking skills and the ability to synthesize theoretical knowledge with nursing practice through the integration of the nursing process
- 4) Offer a BSN educational opportunity to residents of San Luis Valley incorporating the health care needs of rural communities thus supporting economic stability of the region.
- 5) Provide education for the assumption of leadership roles and graduate students who have the ability to communicate with members of the health care team through quality written, oral and electronic means
- 6) Facilitate active learning in a supportive environment
- 7) Recruit faculty who are current with the health care literature and evidenced-based nursing practice
- 8) Provide formative and summative evaluation of the ASC nursing program as a means to improve organizational effectiveness
- 9) Enhance financial stability through the recruitment and retention of nursing students

# **Philosophy of Adams State College Department of Nursing**

The philosophy of ASC's Department of Nursing is centered on the success of the student. It is our belief that students learn best in a supportive environment, thus caring is an integral element in the educational program. Caring by the faculty role model, assists the student to assimilate caring into nursing practice.

The essence of nursing is the caring relationship between client and nurse, designed to preserve and enhance the integrity, dignity and worth of the individual. Ethical, moral, legal and humanistic principles are upheld within this relationship. These principles are incorporated into the education of the ASC nursing student.

The nurse is a member of an interdisciplinary team who practices the art and science of nursing from a holistic perspective. The nurse collaborates with patients and the health care team for the design, provision, management and coordination of care. Communication, leadership and critical thinking skills are mandatory for the assessment and provision of nursing care. The nurse's clients include individuals, families, groups and communities.

Health promotion, risk reduction and disease prevention are essential ingredients of nursing care. The nursing process and information technologies enable the nurse to practice within an evidenced based model. The professional nurse advocates for quality care that respects human diversity within a global environment. Involvement in professional organizations, as well as in the political and regulatory processes, demonstrates the nurse's commitment to the profession of nursing.

## **ANA CODE OF ETHICS**

The nurse, in all professional relationships, practices with compassion and respect for the inherent dignity, worth, and uniqueness of every individual, unrestricted by considerations of social or economic status, personal attributes, or the nature of health problems.

The nurse's primary commitment is to the patient, whether an individual, family, group or community.

The nurse promotes, advocates for and strives to protect the health, safety and rights of the patient.

The nurse is responsible and accountable for individual nursing practice and determines the appropriate delegation of tasks consistent with the nurse's obligation to provide optimum patient care.

The nurse owes the same duties to self as to others, including the responsibility to preserve integrity and safety, to maintain competence and to continue personal and professional growth.

The nurse participates in establishing, maintaining and improving health care environments and conditions of employment conducive to the provision of quality health care and consistent with the values of the profession through individual and collective action.

The nurse participates in the advancement of the profession through contributions to practice, education, administration and knowledge development.

The nurse collaborates with other health professionals and the public in promoting community, national and international efforts to meet health needs.

The profession of nursing, as represented by associations and their members, is responsible for articulating nursing values for maintaining the integrity of the profession and its practice, and for shaping social policy.

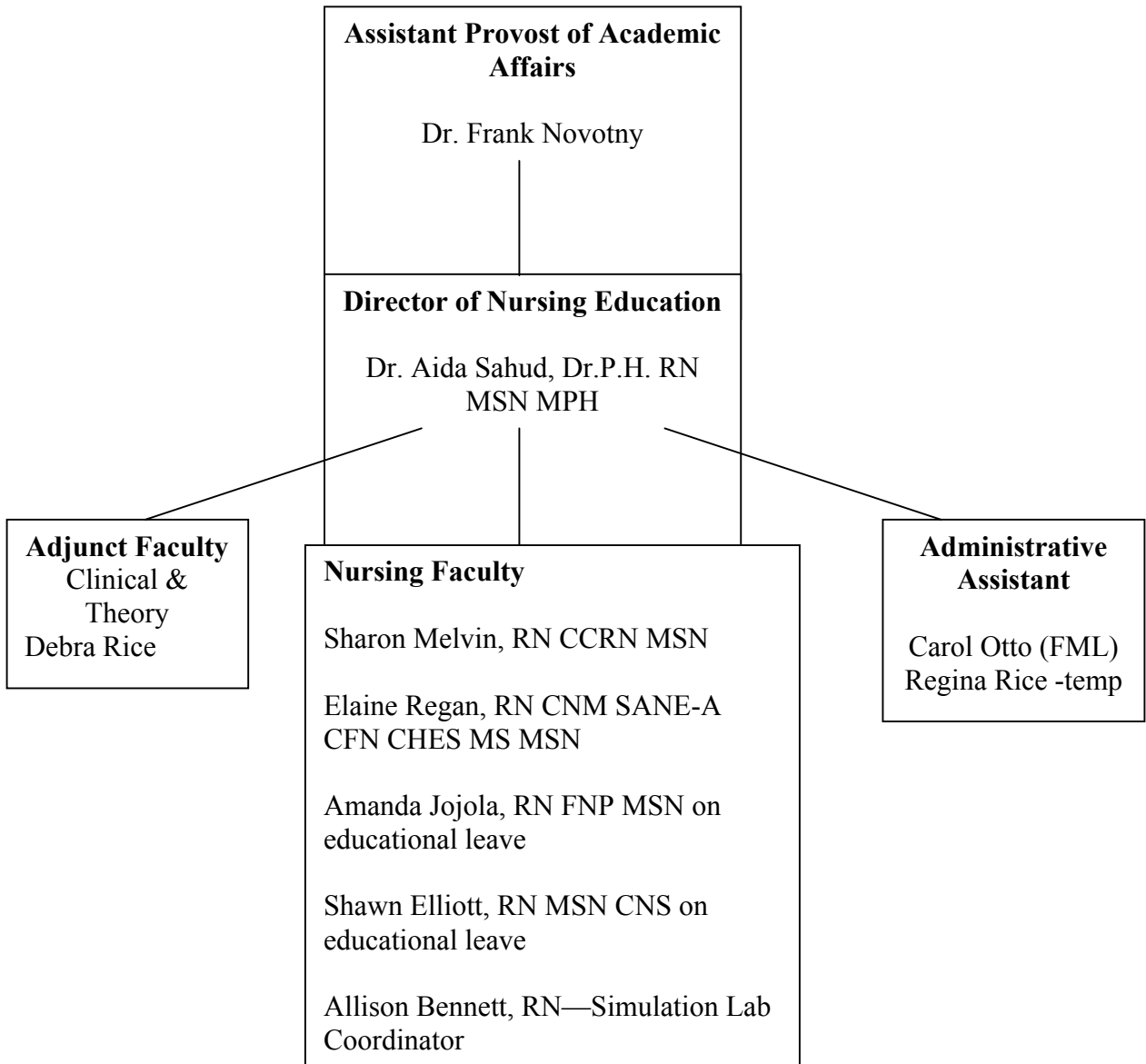
Reference: ANA, Code of Ethics for Nurses, Washington, D.C., American Nurses Publishing, 2001.

## **Florence Nightingale Pledge**

I solemnly pledge myself before God and in the presence of this assembly, to pass my life in purity and to practice my profession faithfully. I will abstain from whatever is deleterious and mischievous, and will not take or knowingly administer any harmful drug. I will do all in my power to maintain and elevate the standard of my profession, and will hold in confidence all personal matters committed to my keeping and all family affairs coming to my knowledge in the practice of my calling. With loyalty will I endeavor to aid the physician in his work, and devote myself to the welfare of those committed to my care.

This modified "Hippocratic Oath" was composed in 1893 by Mrs. Lystra E. Gretter and a Committee for the Farrand Training School for Nurses, Detroit, Michigan. It was called the *Florence Nightingale Pledge* as a token of esteem for the founder of modern nursing.

# ASC Nursing Organizational Chart



## Academic Information

### Bachelor of Science Nursing Curriculum = 124 TCH

Based on the following teaching schedule: M-F  
0900-12:15/ Lab Days split into 2 time frames at 3 hours each  
Approx. 15 days to get clinical done

	FALL	SPRING
Freshman	ENG 101 (3) PSYC 101 (3) BIO 205 (4) MATH (3) A & H (3) TCH=16	ENG 102 (3) PSYC 233 (3) BIO 206 (4) PSYC 211 (4) SOC 201 (3) TCH=17
Sophomore	HGP/HIST (3) A&H (3) BIO 215 (4) BIOL 125 (2) CHEM 105 (5) TCH=17	NURS 200 (3) NURS 201 (4) NURS 202 (3) NURS 203 (3) NURS 204 (2) TCH=15
Junior	NURS 300 (3) NURS 300C(3) NURS 302 (3) NURS 303 (3) NURS 303C (3) TCH=15	NURS 304 (3) NURS 306 (3) NURS 306C(3) NURS 307 (3) NURS 308 (3) TCH=15
Senior	NURS 400 (3) NURS 400C (2) NURS 401 (3) NURS 401C (2) NURS 402 (3) NURS 402C (2) TCH=15	NURS 403 (4) NURS 403C (3) NURS 404 (2) NURS 405 (5)  TCH=14

# Bachelor of Science in Nursing Program

## Course Descriptions

**NURS 200** Introduction to Nursing (45 clock hours lecture) *Prerequisites: enrolled in the BSN program.*

This course is an introduction to nursing as a practice profession with emphasis on nursing's history, process, roles and relationship to other health care disciplines. Explores concepts of professionalism, adult learning, culturally congruent care, spirituality, and communication skills, evidence based care, and legal aspects. Adams State College Nursing Program mission, philosophy, and organizing framework, program expectations are presented. Ongoing preparation for the NCLEX throughout the program will be emphasized

**NURS 201** Pathophysiology (60 clock hours lecture) *Prerequisites: enrolled in the BSN program.*

This course provides an overview of pathophysiological processes across the major organ systems. It is divided into two content areas: general concepts and specific disease processes. General concepts include the topics of cellular environment, genetics, stress and disease, immunity, inflammation, and cellular proliferation. Common disease processes from the major organs systems are presented.

**NURS 202** Pharmacology (45 clock hours lecture) *Prerequisites: enrolled in the BSN program.*

The course will provide an in-depth perspective of the pharmacokinetics and pharmacodynamics of medications. The students will learn to consider body weight, age, body composition, and circulatory dynamics when analyzing the drug's effect. Other topics to be included in this course include therapeutic effects, side effects, toxic effects, idiosyncratic reactions, drug tolerance, drug interactions and drug dose response. The student will learn basic drug calculations. Discussion will focus on the physiological action and effect of selected drug groups, and factors that will influence the drug actions such as physiological variables, environmental conditions, psychological factors and diet.

**NURS 203** Health Assessment (24 clock hours lecture, 21 clock hours lab) *Prerequisites: enrolled in the BSN program.*

The course will focus on the theoretical and practical aspects of acquiring data through a client health history and physical examination through the life span. A laboratory portion will consist of demonstration and actual wellness assessment with identification of needs. Students will be responsible for ~~four~~ independent clinical health assessments and case studies.

**NURS 204** Health Care Ethics (30 clock hours lecture) *Prerequisites: enrolled in the BSN program.*

This course will focus on the moral and ethical dimensions of nursing practice and in health care today. Topics to be explored include biomedical technological advances, quality of life and ethical theories and principles. The nurses' role in ethical situations

including client advocacy, informed consent, advanced directives and nursing accountability will be explored. The students will also discuss how values, emotions, faith, and spiritual beliefs influence ethical decision-making. The law, culture, gender, generational issues, as well as male and female roles, are considered in the setting of an ethical dilemma. A systematic approach to resolving ethical issues and the role of an Ethics Committee as a resource are presented. Discussion will also take place regarding the Nursing Code of Ethics and its effect on nursing practice

**NURS 300** Nursing Fundamentals (24 Clock Hours Lecture, 21 Clock Hours Lab)

Prerequisites: enrolled in the BSN program and successful completion of all previous 200 level nursing courses.

This course will focus on the nursing process as a strategy for making clinical judgments and implementing care. The student will learn basic concepts in nursing as a framework for future course work. An emphasis will be placed on critical thinking and evidence based application of concepts taught.

**NURS 300C** Fundamentals Clinical (90 Clock Hours Total/84 clinical/6 simulation)

Prerequisites: enrolled in the BSN program and successful completion of all previous 200 level nursing courses.

This course will focus on concepts learned in Nursing Fundamentals as a strategy for making clinical judgments and implementing care. Practice will take place in both the actual clinical setting and the simulation lab. The student will learn basic concepts in nursing as a framework for future course work. An emphasis will be placed on critical thinking, the nursing process and evidence based application of concepts taught.

**NURS 302** Professional Practice (45 Clock Hours Lecture)

Prerequisites: enrolled in the BSN program and successful completion of all previous level 200 level nursing courses.

This course emphasizes an in-depth exploration of the development of healthcare policy in the United States. The evolution of public and private healthcare insurance and the societal implications of these policies will be analyzed. Students will understand the U.S. healthcare delivery system to determine how social, political, legal, economic policy and regulatory factors affect health disparities. Access to healthcare for the American population will be addressed. Critical thinking skills will be developed to understand future trends and changes affecting healthcare delivery policy and nursing practice.

**NURS 303** Medical Surgical Nursing I (45 Clock Hours Lecture) Prerequisites: enrolled in the BSN program and successful completion of all previous 200 level nursing courses. Emphasis in this course is on the transition from student to the professional nursing role of the Baccalaureate prepared nurse. This course is a comprehensive study of concepts related to critical thinking, culture, pain and end of life issues. Also considered is substance abuse, fluid and electrolyte and acid-base balance, safety, oxygenation, tissue perfusion, cardiac output. The various interrelationships among systems are highlighted. The application of the nursing process and evidence based criteria will be used in the care of stable adult patients in a clinical setting.

**NURS 303C** Medical Surgical Nursing I Clinical Medical (90 Total Clinical Hours/ 84 Clinical Hours & 6 Simulation) *Prerequisites: enrolled in the BSN program and successful completion of all previous 200 level nursing courses.*

Emphasis in this course is on the transition from student to the professional nursing role of the Baccalaureate prepared nurse. This course is the application of concepts learned related to: critical thinking, culture, pain and end of life issues, substance abuse, fluid and electrolyte and acid-base balance, safety, oxygenation, tissue perfusion, cardiac output and the various interrelationships found in adult patients utilizing both a clinical setting and a simulation lab. The application of the nursing process and evidence based criteria will be used in the care of adult patients in a clinical setting.

**NURS 304** Geriatric Nursing (45 Clock Hours Lecture) *Prerequisites: enrolled in the BSN program and successful completion of all previous 200 level nursing courses.* This course will consider the unique set of principles, body of knowledge and skills necessary for the practice of geriatric nursing. Students will be provided with the theoretical background necessary to understand health system issues affecting older adults. Comprehensive assessment of physical, functional, psychosocial, and cognitive capacities considered in detail. Common problems associated with cardiovascular, respiratory, neurological, musculoskeletal, sensory, and genitourinary systems that affect older adults will be discussed. In addition, principles of continuity of care, rehabilitation, nutritional and pharmacodynamic changes, diversity and ethics will be integrated throughout the course.

**NURS 306** Medical Surgical Nursing II (45 Clock Hours) *Prerequisites: enrolled in the BSN program and successful completion of all previous 200 level nursing courses.* This course is a comprehensive study of concepts related to problems of the cardiovascular, peripheral vascular, respiratory, hematological, and endocrine systems. Various interrelationships of these concepts will be explored as it concerns stable and unstable adult patients in a clinical setting. The application of the nursing process and evidence based criteria will be used in the care of adult patients in a clinical setting.

**NURS 306C** Medical Surgical Nursing II Clinical (90 Total Clock Hours/ 84 Hours Clinical & 6 Hours Simulation) *Prerequisites: enrolled in the BSN program and successful completion of all previous 200 level nursing courses.* Concepts related to problems of the cardiovascular, peripheral vascular, respiratory, hematological, and endocrine systems will be explored. The various interrelationships among these concepts found in both stable and unstable adult patients in a clinical setting will be emphasized. The application of the nursing process and evidence based criteria will be used in the care of adult patients in both a clinical setting and a simulation lab.

**NURS 307** Nursing Research (45 Clock Hours Lecture) *Prerequisites: enrolled in the BSN program and successful completion of all previous 200 level nursing courses.* This course will provide an introduction to the research process including design and methodology. Interpretation and critique of research findings for use in nursing practice will be emphasized. Research questions relevant to clinical practice will be identified.

This course will utilize critical analysis of existing research to support data-driven decision-making and implementation of evidence-based practice.

**NURS 308** Nursing Management (45 Clock Hours) Prerequisites: enrolled in the BSN program and successful completion of all previous 200 level nursing courses.

The focus of this course will be on the theories of nursing management and leadership and their application to work practices. Content will include the basic functions of management: planning, organizing, directing, and delegating. Topics such as decision-making, change, budgeting, conflict resolution and personnel issues will be explored. The students will concentrate on critical decision making and formulating independent nursing judgments in complex nursing situations. Content will also focus on supervisory skills and collaboration with other members of the health care team in the structured (hospital or nursing home) or unstructured (community assessments) health care settings.

**NURS 400** Obstetrical & Gynecological Nursing (39 Clock Hours & 6 Clock Hours Skills/Simulation)

Prerequisites: enrolled in the BSN program and successful completion of all previous 300 level nursing courses.

This course will provide a family-centered approach to professional nursing practice of the childbearing family from pre-conception through postpartum including newborn care. Nursing care of the woman throughout the lifespan will be presented. The impact of psychosocial and cultural values and practices will be explored. Legal and ethical accountability will be integrated throughout the course. The learner will develop specific cognitive and psychomotor competencies which will be demonstrated in an effective performance in both a skills/simulation lab and clinical area.

**NURS 400C** Obstetrical & Gynecological Nursing Clinical (60 Clock Hours Clinical)

Prerequisites: enrolled in the BSN program and successful completion of all previous 300 level nursing courses.

Emphasis in this course will be on the transition from student to the professional nursing role of the Baccalaureate prepared nurse. This course will apply skills related to caring for obstetrical, gynecological, and newborn patients. Critical thinking skills will be learned and applied to complex problems and the interrelationships found in the care of obstetrical, gynecological, and newborn patients in a clinical setting. The application of the nursing process as well as evidence based criteria will be used in this process.

**NURS 401** Pediatric Nursing (39 Clock Hours Lecture, 6 Clock Hours Simulation)

Prerequisites: enrolled in the BSN program and successful completion of all previous 300 level nursing courses.

This course will provide a family-centered approach to professional nursing practice of children from birth through adolescence across the health continuum. The impact of psychosocial factors, cultural values, and practices will be explored. Legal and ethical accountability will be integrated throughout the course. The learner will develop specific cognitive and psychomotor competencies which will be demonstrated in an effective performance in both the simulation lab and clinical area. Critical thinking and the

nursing process will be integrated though out the course utilizing evidence-based guidelines.

**NURS 401C Pediatric Nursing Clinical (60 Clock Hours Clinical)**

Prerequisites: enrolled in the BSN program and successful completion of all previous 300 level nursing courses.

This course will apply skills related to caring for pediatric patients across the health continuum. Critical thinking skills will be learned and applied to complex problems and interrelationships found in the care of pediatric patients in a clinical setting. The application of the nursing process and evidence based criteria will be used in this process.

**NURS 402 Psychiatric Nursing (42 Clock Hours Lecture/3 Clock Hours Simulation)**

Prerequisites: enrolled in the BSN program and successful completion of all previous nursing courses.

This course will examine the student's personal meaning of health and relationships as it concerns the individual, family and groups. Mental health assessment, health promotion, roles and responsibilities within the profession of psychiatric nursing will be introduced. Health care trends related to primary health care, determinants of health and wellness will be examined. Concepts of crisis, comfort, anger, hope, loss, power, resiliency and integrity will be introduced.

**NURS 402C Psychiatric Nursing Clinical (60 Clock Hours Clinical)** Prerequisites: enrolled in the BSN program and successful completion of all previous 300 level nursing courses.

This course will allow the student to apply the various concepts learned in NURS 402 and other nursing courses to patients in both acute psychiatric settings and various community settings. Students will incorporate critical thinking, the nursing process, and evidenced-based guideline for the care of the psychiatric patient. Health and safety needs within the psychiatric setting will be explored.

**NURS 403 Rural/Community Health (60 Clock Hours Lecture)** Prerequisites: enrolled in the BSN program and successful completion of all previous nursing courses.

This course will examine the role of the nurse in promoting the health of aggregates, families, and individuals. The concept of community as client will be emphasized. The core public health functions of family assessment, community assessment, policy development, and assurance will be explored through student involvement in the legislative process, community assessment, case management, health teaching, and the investigation of communicable diseases. The provision of nursing care in a rural setting will also be examined.

**NURS 403C Rural/Community Health Clinical (90 Contact Hours Total /84 Clinical & 6 Simulation)** Prerequisites: enrolled in the BSN program and successful completion of all previous 300 level nursing courses.

This course will allow students to address the concerns and health needs of the community. In a collaborative effort between the community and ASC, the students will apply knowledge gained through nursing academic coursework to implement a plan for

those health concerns. Emphasis will be placed on developing interpersonal skills and achieving social changes that influence health and quality of life. Course includes an extensive clinical practicum within a public health setting with emphasis on nursing care in a rural community.

**NURS 404** Service Learning (60 Clock Hours Clinical) Prerequisites: enrolled in the BSN program and successful completion of all previous 300 level nursing courses. The Service Learning project will provide the student with a unique opportunity to further develop the nursing role as a responsible and caring professional. In providing service to an agency or aggregate of clients, the ASC nursing student will apply and integrate concepts learned from previous coursework in the arts, sciences, humanities, and nursing in meaningful ways. The Service Learning project will enhance the ASC Nursing Program mission with its focus on cultural diversity, community service, and rural health care.

**NURS 405** Nursing Internship (150 Clock Hours Clinical including management) Prerequisites: enrolled in the BSN program and successful completion of all previous nursing courses. This course will be an intensive field experience in an area of interest to the student. This will include the application of management and leadership principles learned in NURS 308. Critical thinking and evidence based practice will be emphasized. Nursing 405 will be a means of integrating previous nursing and general education coursework. The nursing student will be under the supervision of a preceptor in the clinical area and coordinated by the ASC Nursing faculty.

## STUDENT GOALS AND LEARNING OUTCOMES

Goal	Objective	Activity	Outcomes
1. Student incorporates knowledge and skills in leadership, quality improvement and patient safety.	1. Use of skills of inquiry, analysis, and information literacy to address practice issues.	<ol style="list-style-type: none"> <li>1. Task delegations</li> <li>2. Conflict resolution</li> <li>3. Team building</li> <li>4. Communication skills</li> <li>5. Role play management skills</li> </ol>	1. Demonstrates clinical leadership skills as evidenced by successful completion of clinical rotations and evaluations.
	2. Utilizes current literature as a basis for practice.	<ol style="list-style-type: none"> <li>1. Pre and Post clinical discussion and written assignments.</li> <li>2. Concept maps</li> </ol>	1. Incorporates current research into evidence based practice determined by clinical evaluations
	3. Integrates theories and concepts from liberal education into nursing practice.	<ol style="list-style-type: none"> <li>1. Written assignments</li> <li>2. Case studies</li> <li>3. Reading assignments</li> </ol>	1. Applies concepts from the social, behavioral, historical, political, and economical disciplines as evidenced by quality of written work and patient care.
	4. Recognizes situations when patient safety is in jeopardy	<ol style="list-style-type: none"> <li>1. Simulation laboratory activities</li> <li>2. Clinical orientation (fire extinguishers, exits, O2 shut-off valves)</li> <li>3. Post clinical discussions</li> <li>4. Review policies on safety issues</li> </ol>	<ol style="list-style-type: none"> <li>1. Verbalizes an awareness and promotion of patient safety issues.</li> <li>2. Takes prompt action and immediate reports errors or hazardous situations</li> </ol>
	5. Has familiarity with infection control practices	<ol style="list-style-type: none"> <li>1. OSHA video</li> <li>2. simulation lab activities</li> <li>3. clinical assignments</li> </ol>	Verbalizes and demonstrates infection control procedures

<p>2. Student learns critical thinking skills and major concepts through the application of current research based evidence and the nursing process</p>	<p>1. Uses critical thinking skills</p> <p>2. Recognizes interrelationships of major concepts in providing nursing care</p> <p>3. Ability to search databases and apply research based evidence</p>	<p>1. Case studies 2. Role playing 3. Simulation scenarios 4. Skills laboratory</p> <p>1. Concept maps</p> <p>1. Written assignments 2. Presentations 3. Clinical assignments</p>	<p>1. Demonstrates ability to access current literature</p> <p>2. Provides nursing care with evidence based research knowledge as evidenced by clinical evaluations and written work.</p>
<p>3. Supports and improves the care of patients through the collection and management of patient information</p>	<p>1. Understands the use of computer systems to document interventions related to achieving nurse sensitive outcomes as demonstrated in the simulation laboratory and clinical areas.</p> <p>2. Knows HIPPA regulations</p>	<p>1. Electronic health record simulation scenarios</p> <p>2. Clinical assignments</p> <p>1. HIPPA video 2. Case Studies</p>	<p>1. Explains the use of emerging technology in the application of patient care.</p> <p>1. Understands the importance of confidentiality</p>

<p>4. Student analyzes local and global health care policy, finance, ethics and regulatory systems</p>	<p>1. Analyzes economic and political theory as it relates to health care.</p> <p>2. Advocates for patients, families, and the nursing profession.</p> <p>3. Displays ethical reasoning and actions.</p>	<p>1. Current events 2. Discussions 3. Assigned readings 4. Assigned projects/papers</p> <p>1. Letter writing campaigns 2. Participation in local county organizations 3. Engagement in the local, state, and federal political process</p> <p>1. Debates 2. Role playing 3. Case studies</p>	<p>1. Applies business principles to nursing management as evidenced by effective task delegation and monitoring</p> <p>1. Uses an ethical framework to evaluate the impact of social and economic policies on health care, especially for vulnerable populations as reflected in clinical and written assignments</p> <p>1. Engages in ethical reasoning and actions to provide leadership in promoting advocacy, collaboration, and social justice as a socially responsible citizen as observed in clinical practice and class work.</p>
--	--	---	---

<p>5. Student shows an awareness of the need for professionalism in nursing and interdisciplinary collaboration.</p>	<p>1. Integrates nursing care objectives as a member of the health care team.</p> <p>2. Coordinates patient needs with other team members.</p> <p>3. Describes the benefits of involvement in the workplace and professional organizations.</p>	<p>1. Participates as a member in multi-disciplinary teams.</p> <p>1. Attends interdisciplinary activities/conferences</p> <p>1. Initiates positive discussion relative to the professional values of nursing.</p>	<p>1. Facilitates discussions with health care team members relative to patient care.</p> <p>1. Applies information learned from other health care team members to improve patient outcomes.</p> <p>Communicates effectively utilizing written, verbal, non-verbal, and emerging technology.</p> <p>1. Assumes leadership role in facilitating group meetings.</p> <p>2. Delegates and monitors tasks appropriately.</p>
--	---	--	--

<p>6. Incorporates health promotion and disease prevention at the individual and population level through the use of medical, public health and holistic health models</p>	<p>1. Has awareness of protective and preventive factors including genetics which influence the health of individuals, families, groups, communities, and populations by verbalizing referral needs.</p> <p>2. Understands the concept of holistic health</p> <p>3. Has knowledge of complementary alternative medicine modalities</p>	<p>1. Conducts health histories.</p> <p>2. Completes epidemiological assessments for communicable diseases and chronic illnesses.</p> <p>3. Develops health promotion/education material for the patients, groups and community</p> <p>5. Collaborates with other healthcare professionals and patients to provide spiritually and culturally appropriate health promotion as well as disease and injury prevention interventions.</p> <p>6. Assists with the discharge process.</p>	<p>1. Demonstrates competence in interview techniques and documentation for health histories as evaluated by nursing faculty.</p> <p>2. Ability to provide case management based on epidemiological assessments as reflective in assignments</p> <p>1. Incorporates appropriate cultural and spiritual interventions into patient education of individuals and groups as demonstrated in clinical areas.</p> <p>1. Active participation as a member of the health care team.</p>
<p>7. Student integrates knowledge of growth and development across the lifespan when planning nursing care</p>	<p>1. Identifies and applies developmental theories</p>	<p>1. Concept maps</p> <p>2. Written assignments</p> <p>3. Case studies</p>	<p>1. Plans appropriate interventions for the developmental stage of the patient</p>

8. Incorporates nursing theory concepts of caring, compassion, therapeutic use of self and non-judgmental attitudes when planning and implementing nursing care	1. Comprehends concepts inherent in nursing theory	1. Case studies 2. Values clarification 3. Role play 4. Clinical assignments	1. Recognizes importance of caring, compassion and non-judgmental attitude on patient outcomes
---	--	---	--

<p>9. Gains an appreciation of the physiological processes of the body recognizing the complexity of a multi-system unit</p>	<p>1. Compare and contrast normal anatomy and physiology to the pathophysiological effects on body function</p> <p>2. Comprehends the impact of pharmacological effects on body function</p> <p>3. Able to distinguish normal from abnormal health assessment findings throughout the life cycle</p> <p>4. Appreciates the vulnerabilities of children and elders in relation to pharmacological effects</p> <p>5. Recognizes the physiological changes that take place in the maternity patient and her fetus</p> <p>6. Prevention of medication errors</p>	<p>1. Case studies</p> <p>2. Simulation lab activities</p> <p>3. Reading assignments</p> <p>4. Writing assignments</p> <p>5. Clinical assignments</p> <p>6. utilization of the nursing process</p>	<p>1. Appreciates the need for respectful touch</p> <p>2. Is knowledgeable about the interrelationships of all body systems</p> <p>3. Administers medications cognizant of patient safety</p> <p>4. Plans, implements and evaluates nursing care</p> <p>5. Realizes need for individualized nursing care with respect to patient's age</p>
--	--	--	--

## Academic Information

### Advisement

Each new student to ASC Nursing Program is assigned an academic advisor. It is important the student work closely with the advisor in planning a relevant course schedule. The student, however, is responsible for knowing the requirements for graduation from the Nursing Program.

When registering for ASC, the student is expected to follow the registration procedures as outlined and prescribed by the ASC Office of Records. Students are assigned a PIN number each semester to ensure the student has met with their advisor prior to enrolling in courses. The student cannot enroll without a PIN number.

### Admission to the Nursing Program

Prospective nursing students will receive an application packet for the BSN program during Spring advisement of their freshman year. Packets are due by August 1 prior to the Sophomore year. Students will receive notification of admission status by November 1 of the Sophomore year.

**Note:** Admission Priorities: First priority will be given to pre-nursing students enrolled at ASC. Second priority will be given to San Luis Valley Residents. Third priority will be given to Colorado and New Mexico residents.

### Admission Requirements:

1. Acceptance into ASC
2. Minimum of 3.0 GPA required after completion of all general education courses and nursing pre-requisites, acceptance will be **CONDITIONAL** to the final grade point average including course grades for the first semester of the Sophomore Year.
3. Successful completion of technical proficiency test or course (CSCI 100 or BUS 120)
4. Proof of having completed a Nursing Assistant course or experience with basic patient care skills
5. Successful completion of a basic patient care proficiency checklist
6. A 500-word essay addressing honesty, initiative and empathy
7. Two letters of recommendation. \*
8. Background check including drug screen and fingerprinting. \*\*
9. A physical exam and updated immunization record.
10. Current CPR certification.
11. A non-refundable application fee to the nursing program for application and lab fees.
12. Malpractice insurance ongoing throughout program enrollment.

14. Official transcripts sent directly to the Nursing Department unless they have already been sent to the records evaluator. Please notify us if your transcripts have been received by ASC.

\* One from a professor and one from someone in an authoritative position. Examples include an employer, coach, or religious leader. Letters from relatives are not acceptable

\*\* Nursing students are required to submit to random drug screening at own expense  
Fingerprints are required prior to admission and in the second semester of the junior and senior years

**NOTE:** Some of the clinical rotations will require travel to outlying areas. Students will be responsible for housing and other expenses.

**NOTE #2: Admission priorities: First priorities will be given to pre-nursing students enrolled at ASC. Second priority will be given to San Luis Residents. Third priority will be given to Colorado and New Mexico Residents.**

## Scholastic Requirements

The Department of Nursing has a responsibility to the public and to the nursing profession; thus it reserves the privilege of retaining only those students who, in the judgment of the faculty, demonstrate high academic standards. These standards include honesty, accountability and accepting responsibility for one's work.

Each student is responsible for knowing his/her standing academically.

Grading Scale:

93-100%	A
90- 92%	A-
87-89%	B+
83-86%	B
80-82%	B-
77-79%	C+
73-76%	C
70-72%	C-
67-69%	D+
63-66%	D
60-62	D-
59% or below	F

To be eligible for graduation from the Department of Nursing, a student must achieve a minimum of a "C" in each graded course or "P" in each pass/fail course in the curriculum.

If a student fails ("D" or "F") a nursing course, that student is allowed to retake the course ***one time only*** and must receive a "C" or better. The ability to repeat a course will be on a space available basis only. Students may repeat a total of two (2) ***different***

nursing courses during their enrollment in the Nursing Program. See Probation and Progression section of this handbook for further information.

## **Additions, Withdrawals and Drops**

The Nursing Program will adhere to ASC add, withdrawal, and drop policies as outlined in the ASC Class Schedules.

## **Transfer Credits**

ASC Undergraduate Catalog states:

### **Transferring Credits**

Adams State will accept work in which grades of A, B, C, P (pass), CR (credit) and S were earned for transfer credit.

Courses in which a grade of D was earned are not accepted for transfer unless the course is an integral part of an associate of arts or associate of science degree.

Students with advanced placement scores of 3 or higher and CLEP scores in the 50th percentile or higher may receive credit upon approval by the department chair of the appropriate department.

Vocational courses and courses which are listed as "no equivalent" at Adams State can be considered for credit if grades of A, B, or C have been earned. Course equivalency should be approved by the appropriate department chair.

Credit must be approved by the department chair of the student's major.

There is no limit to the number of transfer hours accepted. However, students are required to complete a minimum of 30 institutional hours to obtain a BA or BS degree.

Transfer students are urged to visit the campus and meet with the transfer student coordinator to ensure a smooth transition of transfer credits.

Transfer credit more than 10 years old must be evaluated by the transfer student coordinator (if the course falls under the general education requirements or equivalent) or the department chair of the area offering the course for which the credit would be issued.

The technology proficiency exam and writing assessment are institutional graduation requirements that must be satisfied.

Adams State College will evaluate courses in three categories:

Category 1: General education courses, their equivalents (both in state and out of state), and courses specified in the statewide core transfer process or the guaranteed transfer process with grades of C or better will be evaluated by the Transfer Student Coordinator.

Category 2: Upper level courses (300-499) or courses specifically related to a student's intended major with grades of C or better will be evaluated for acceptance by the department chair for which the credit would be issued.

Category 3: Credits that fall outside of Categories 1 and 2 (ie, elective credits) will be evaluated for acceptance by the Transfer Student Coordinator.

## **Program Completion Requirements for the BSN Program**

To be eligible for graduation from the Department of Nursing, a student must achieve a minimum of a “C” or better in each course in the block curriculum. The total amount of credit hours needed for graduation is 124.

Hours in the major	74
Hours in supporting courses/general education	50
Total credits to graduate	124

## **Writing Assessment**

The writing assessment per Adams State College policy will be accomplished at the start of the junior year. The Nursing Department Writing Assessment Committee will provide the student with topic choices and writing rubric.

## **Technology Proficiency**

All BSN candidates must demonstrate baseline technological proficiency prior to admission into the Nursing program. The requirement may be met by scoring 70% or higher on the ASC Technology Proficiency Examination or by passing an approved course with a grade of C or better. Courses meeting this proficiency are BUS 120 (Business Computer Applications) and CSCI100 (Introduction to Computers).

Note: The ASC Catalog, page 47 states that , "All students must demonstrate baseline proficiency with technology by either:

1. Passing the Adams State Technology Proficiency Examination with a grade of 70 Percent or better, or
2. Passing an approved technology course with a grade of C- or better.

This proficiency must be achieved by the end of the Sophomore year.

## **Classroom/Clinical Attendance**

Punctuality and attendance for all classes/clinicals is an important part of professional accountability. ASC attendance policy states:

### **ASC Excused Absence Notification Policy:**

All excused absence verification (except for regularly scheduled athletics travel), shall be processed by the Office of Student Affairs. Upon verification of the excused absence, the Office of Student Affairs will notify each of the student’s instructors via email. The student must make up any missed assignments or examinations.

It is up to the professor's discretion to let the student makeup any work missed by an absence, even those excused by the Office of Student Affairs. The student is responsible for talking to their professor(s) concerning any missed classes.

The following are absences that will be excused by the Office of Student Affairs (with required documentation):

- *Illness* - medical documentation required (note from doctor, emergency room verification, etc.).
- *Funeral* – funeral program, obituary notice.
- *Jury Duty* – must bring in documentation or jury service or jury summons form.
- *Mandatory Court Appearance* – must bring in a copy of court papers clearly stating date of appearance.
- *School Sponsored Activity* – must have letter from advisor stating group name, purpose, day and time for absence.
- *Military Service*
- *Post-Secondary School Interviews* – (i.e. graduate school, law schools) with appropriate documentation.

Students missing class for travel to a school sponsored activity will be follow the procedures for regularly scheduled athletics travel.

A student requesting an excused absence for any cause other than travel to school sponsored activities will provide the required documentation, cited in the policy, to the Office of Student Affairs.

The Office of Student Affairs will verify the absence and notify all the student's instructors of the absence.

The student will meet with the instructor to identify any missed work and establish a date for its completion.

Student missing class for travel to school sponsored activities will meet with the instructor to identify any missed work and establish a date for its completion at least 48 hours prior to departure.

The student is responsible for notifying the instructor of any regularly scheduled athletic travel using documentation provided by the coach or athletic director.

The student is responsible for requesting an excused absence for other reasons from the Office of Student Affairs.

The student is responsible for meeting with the instructor to identify any missed work, and for completing that work on a scheduled determined by the instructor,

The Office of Student Affairs is responsible for notifying instructors of any excused absences.

The Instructor is responsible for determining the extent to which excused absences will be allowed if they do not fall into one of the approved categories, and for determining any work the student is to make up and the schedule on which it is to be completed.

Coaches are responsible for providing travel rosters to students in advance of the travel according to the policy in section I.

In addition to the ASC absence policy the following applies to 4 year BSN students:

When absence is unavoidable, students should report the reason to the course instructor and assume the responsibility for all classroom work they have missed.

The final course grade may be reduced at the discretion of the course instructor as specified in the course syllabus

Excused clinical absences **must be** made up before the end of the clinical block. Student must contact the faculty person regarding make-up days.

For further clarifications, see the course syllabus

## **Classroom/Clinical Behavior**

Although there may be no formal scoring, regular attendance and active participation in class/clinical is essential to success. **Note:** Making up work following absences is the responsibility of the student.

Students are expected to be respectful of their colleagues. Disruptive behavior will not be tolerated. Students are expected to be on time. Prior notification to faculty in the event of absence or tardiness is expected. ASC protocol will be followed. Violation may result in failure of, or expulsion from, the course at the discretion of the instructor.

## **Academic Conduct**

Academic integrity encompasses honesty in classroom and practice settings. Integrity is essential to accountability in nursing education and practice. ***The Department of Nursing standards are firm due to the nature of professional responsibilities and accountability to the client and nursing profession.*** Professional development not only includes theoretical knowledge and clinical competence, but the cultivation of integrity and sound judgment.

Examples of unacceptable academic/ professional integrity are plagiarism and cheating.

The student is accountable for doing all work independently. *Cheating* means intentionally using or attempting to use unauthorized material, information or study aids, or collaborating with other students in any academic exercise, unless specifically authorized by the faculty to work cooperatively. *Cheating* on any exam will result in an “F” or “0” points awarded to that exam. Further disciplinary action is at the discretion of the instructor following Department and College guidelines.

It is understood that in developing any required class projects, the student cites each reference source and gives the proper credit for an idea, quotation or finding. Failure to cite the source of referenced material is unprofessional and violates the code of conduct for undergraduate student behavior. Gross acts of *plagiarism* will result in an “F” or “0” for that assignment without the possibility of making it up. It will be reported to the Associate Provost of Academic Affairs.

The Nursing Department adheres to the Adams State College Academic Integrity Policy as described in the ASC Student Handbook.

## **STUDENT POLICIES AND STANDARDS**

### **Cell Phones**

No pagers or cell phones will be allowed in the clinical area without prior approval of the nursing faculty. Office phones at the clinical facilities will not be used for personal calls. Emergency phone calls are accepted and messages can be delivered to students only if an emergency exists. Arrangements will be made by the clinical instructor in agreement with the clinical liaison as to where emergency calls for students may be received.

### **Dress Code**

Is dependent on clinical agency requirements. The student must wear their ASC campus identification. In addition:

1. Wear flat soled (not > 1 inch) shoes with closed toe
2. No bare midriffs, cleavage or gluteus maximus
3. Hair to be neatly secured above collar, nails natural in color, no acrylic nails
4. Facial hair neatly trimmed
5. Minimal jewelry & makeup... no visible facial or oral jewelry (piercings)
6. Colognes, perfume and scented lotions may not be used
7. No exposed tattoos
8. No gum or tobacco chewing during clinicals

### **Probation**

A student is placed on Department of Nursing academic probation upon receiving a failing grade (“D”, “F”) in a professional program course. Only two different courses may be repeated throughout the nursing program. **In the event that a student fails a course in the Block Curriculum and needs to retake it, there are two options for the student. The first option is that said student must wait a year until the course is available again and retake it. The second option is the student can find a comparable course on or off campus and take it in the summer, however the curriculum of another institution must be approved by faculty member.** The nursing student is required to see a faculty advisor and to complete a probationary agreement

### **Academic Appeals Procedure**

Follow the ASC Academic Appeals Procedure published in the ASC Student Handbook.

### **Discrimination and Sexual Harassment**

The ASC Nursing Department adheres to all ASC Discrimination and Sexual Harassment Policies. See ASC Student Handbook for the Sexual Harassment Policy.

## **Disability Services**

Accommodations for students with disabilities are addressed through the Affirmative Action Office or the Student Affairs Office.

### **Student Policies and Standards (cont'd)**

## **Technical Standards**

Introduction: Candidates for admission, progression, and graduation must meet the minimum technical standards, with or without accommodation:

### **Observation**

Students must be able to perform observational skills necessary to assess the health needs of patients. Observation necessitates the functional use of vision, hearing, tactile and somatic senses. The student must be able to observe lectures, demonstrations, and practice situations in nursing. She/he must be able to observe health assessments and interventions, diagnostic specimens and digital and waveform readings to determine a client's condition and the effect of therapy.

### **Communication**

A student must be able to communicate effectively with clients, teachers and all members of the health care team. He/she must communicate with clients to elicit information regarding history, mood and activity, and to perceive nonverbal communications. Communication includes speech, hearing, reading, writing, and computer literacy. A student must be able to report to members of the health care team, express appropriate information to clients, and teach, explain, direct and counsel people.

### **Motor**

A student must be able to execute gross and fine motor movements required to provide assessment, general care, and emergency treatment of patients. In addition, a student must have physical endurance, physical strength, mobility, vision, tactile abilities and sense of smell to carry out nursing procedures. He/she must have sufficient motor function to elicit information from patients by palpation, auscultation, percussion, and other diagnostic maneuvers. Examples of emergency treatment reasonably required of nurses are CPR, administration of intravenous medications, applications to stop bleeding, and opening of obstructed airways.

### **Intellectual, Conceptual, Integrative, and Quantitative Abilities**

The student must be able to read and understand written documents in English and to solve problems involving measurement, calculation, reasoning, memory, analysis and synthesis. He/she must be able to synthesize knowledge and integrate the relevant aspects of a client's history, physical findings and diagnostic studies. The student must be able to use this information to develop a diagnosis, establish priorities and monitor treatment plans and modalities. In addition, he/she must be able to comprehend three-dimensional and spatial relationships.

### **Behavioral and Social Attributes**

A student must have the capacity to demonstrate full utilization of her/his intellectual abilities, emotional stability, exercise good judgment, and promptly complete all responsibilities attendant to the diagnosis and care of clients. A student must have the capacity to develop mature, sensitive and effective therapeutic relationships with clients. He/she must be able to tolerate physically and mentally taxing workloads and function effectively under stress. As a component of nursing education, a student must demonstrate ethical behavior, including adherence to the professional nursing and student honor codes.

## **Clinical Manuals**

ASC Department of Nursing will adhere to the guidelines established in the Clinical Manuals. Clinical Manuals will be made available to all those supervising nursing students. In addition, all students will be responsible for understanding the content of the clinical manual prior to the first clinical experience.

## **Unusual Occurrence**

### **Policy and Procedure**

An unusual occurrence is any event that has the potential to result in harm to a student or to others while in a nursing classroom or at a clinical site. The student is responsible for informing the clinical instructor and documenting the occurrence immediately.

Documentation will be done on the Department of Nursing form, the State of Colorado Report of Accident, Incident, or Condition (Non-Automobile) form and the necessary forms required by clinical facility. The clinical instructor is responsible for routing the Colorado Report to Adams State College's Human Resource Office. This office will forward the top two copies to Risk Management in Denver, Colorado. One copy of the Colorado form will be filed in the Human Resource Office and one copy will be retained in the Department of Nursing and one copy will be given to the student.

The clinical instructor arranges for immediate care of the student as necessary. The student is sent or taken to the nearest Emergency Department. If the student is in or near SLVRMC ( San Luis Valley Regional Medical Center) he or she should go immediately to the E.R. if necessary and can phone Helen Lester ( Chief Nurse) at 719-587-1203 for further direction. The student is responsible for all health care costs incurred in treatment of an injury. The student's health care costs include both immediate care and any necessary follow-up care. Neither the facility nor ASC is financially responsible for any costs incurred by the student.

It is critically important that the students are aware of the role they play if injured at a clinical site.

If a person is injured outside our geographical area such as: out of state, or in Denver, they need to go the emergency room or the closest Emergent/Urgent care clinic. They then need to contact Human Resources at Adams State College 719-587-7990 and report

the injury. All the necessary forms are available at <http://www2.adams.edu/administration/hr/form/form.php>. Pinnacol, our carrier will then contact the injured person to advise them where to receive continuing care.

NOTE: Adams State College workmen's compensation agreement includes students. The contract between the facility and ASC will include a written statement validating workman's compensation agreement.

2. If the student or person harmed declines immediate care or referral for follow-up, this declination is to be noted on the Report of Unusual Occurrence form under "Other", with an explanation.
3. If the student does not want to sign the form, the faculty member should complete it, note that the student has refused to sign, and provide the student with a copy.
4. Upon notification by the student of an unusual occurrence that involves potential or actual harm to the student, another person, or to the agency, the clinical instructor will meet with the student to determine the nature of the occurrence. The clinical instructor will contact the nursing supervisor at the clinical site to complete the appropriate incident report.
5. The clinical instructor will obtain a copy of the agency incident report and submit that report to the Nursing Program Director.

## Background Checks

Students will undergo a criminal background check prior to admission to the Nursing Program. Official background checks will be conducted by a contracted agency. Students are responsible for all fees associated with background checks.

Students will be asked to sign a waiver, allowing the Nursing Program to share the results of the background checks with the supervisor of the clinical agency being used for the course. ***They will only be shared with clinical agencies upon request; otherwise, the results are securely locked and kept confidential in student file in the ASC Human Resources Department.***

Any conviction, plea of guilty or no contest, or deferred adjudication of the following felony or misdemeanor offenses may jeopardize clinical agency acceptance and may result in dismissal from the Nursing Program:

Any violent felony convictions of homicide. (No time limit)

Crimes of violence (assault, sexual offenses, arson, kidnapping, any crime against an at-risk adult or juvenile, etc.) as defined in section 18-1.3-406 C.R.S. in the 10 years immediately preceding the submittal of application.

Any offense involving unlawful sexual behavior in the 10 years immediately preceding the submittal of application.

Any crime, the underlying basis of which has been found by the court on the record to include an act of domestic violence, as defined in section 18-6-800.3 C.R.S. in the 7 years immediately preceding the submittal of application.

Any crime of child abuse, as defined in section 18-6-401 C.R.S. in the 7 years immediately preceding the submittal of application.

Any crime related to the sale, possession, distribution or transfer of narcotics or controlled substances in the 7 years immediately preceding the submittal of application.

Any felony theft crimes in the 7 years immediately preceding the submittal of application.

Any misdemeanor theft crimes in the 5 years immediately preceding the submittal of application.

Any offense of sexual assault on a client by a psychotherapist, as defined in section 18-3-405.5 C.R.S. in the 7 years immediately preceding the submittal of application.

Crimes of moral turpitude (prostitution, public lewdness/exposure, etc.) in the 7 years immediately preceding the submittal of application.

Registered sex offenders. (No time limit)

Any offense in another state, the elements of which are substantially similar to the elements of any of the above offenses.

More than one (1) D.U.I. in the 7 years immediately preceding the submittal of application.

If the investigation reveals information that could be relevant to the application, the Felony Review Committee may request additional information from the applicant. The offense shall be reviewed on a case by case basis. Judgments are based on the severity, recency, frequency, and nature of the offense. The accuracy of the students' disclosure is also taken into consideration.

Students who have successfully completed the terms of their deferred adjudication agreement will not be disqualified. Offenses older than seven years will not necessarily disqualify you from the Program.

In the event that one or more of the above listed offenses appears on a student's background check, the student will be given the opportunity to discuss the circumstances

of the offense with the Felony Review Committee. Based upon this discussion, the nursing faculty will take one of the following actions:

Dismiss the student from the nursing program.

Share the background check with clinical agencies and allow the clinical agencies to determine whether the student will be allowed to complete the required clinical/field experience in their institution. If the clinical agency denies the student access to clinical experiences in their institution, the student will be dismissed from the nursing program.

## **ASC Nursing Program Substance Abuse Policy**

Adams State College Nursing Department will adhere to the established policies of Adams State College. See the Adams State College Student Handbook for further description.

In addition to ASC policy the following applies for BSN students:

The possession and use of legal, prescription drugs does not violate policy; however, the following will apply:

The possession and use of such legal drugs is prohibited if it effects:

The safety of staff, students or members of the public

The student's learning or task performance

The overall safe and efficient operation of the Adams State College or clinical facility that the student is assigned to.

### **Substance Abuse Testing**

#### **Random:**

During the upper division years of the BSN Program, students will have a random urine test once per semester. If the results are positive, the student will be required to see Mr. Gregg Elliott, Director of the Counseling and Career Center, at Adams State College for counseling sessions. This service is available, gratis, as long as the individual can prove his/her status as a bona fide Adams State College student. The actual urine tests will be held at ASC by the Nursing Department and will cost each student approximately \$25.00 and results will be known at the time of the test.

Our policy has little tolerance for a student who has a positive urine test for substances and/or alcohol. The impaired students will make arrangements for counseling on a weekly basis with the Counseling and Career Center. The Nursing Department will have the student sign a release of information form at the time of the referral which will authorize the Counseling & Career Center staff to communicate the student's attendance and successful/unsuccessful completion of counseling back to the Nursing Department. If the student does not follow up with a series of sessions set by Mr. Elliott and the student herself, this would be grounds for immediate dismissal. If there are positive

results two times, even if the student is seeing the counselor regularly, the student will be dismissed from the program.

#### For Cause:

When there is reasonable cause to believe that a nursing student is under the influence of drugs or alcohol while at school or in the clinical area. Adams State College may require a sample of urine or blood for substance testing purposes.

If a student refuses to take the tests, this would be grounds for termination from the Nursing Program.

#### Testing Results:

Adams State College will adhere to the policies and/or guidelines established by the various clinical agencies. If the agency requires a negative drug/alcohol screen prior to a clinical rotation, ASC will require such testing. The student will not be allowed to begin the clinical rotation until the test results are returned and show no evidence of drug/alcohol use.

If a drug/alcohol screen result is positive, confirmatory screening will be done. If confirmatory testing is also positive, then, disciplinary action and referrals, as defined within this policy, will be taken.

If the test results show evidence of a legal, mood altering drug, students may be required to offer proof that the drug has been prescribed by a physician.

## **Disciplinary Philosophy**

It is the intent of this policy to encourage an enlightened viewpoint towards addiction to alcohol or other drugs, as a behavioral medical problem, which can be treated. Therefore, violation of this policy may result in not only disciplinary action, but also counseling and possibly rehabilitation activities.

## **Right to Report**

In the event ASC Nursing Department suspects illegal activity or threat of violence a report will be made to ASC Police Department.

## **Due Process Procedure**

The student has the right to follow the due process procedure consistent with the disciplinary procedure published in the Adams State College Student Handbook. Please refer to the Student Appeals Board section of the ASC Student Handbook.