

ASC Persistence Study

Grouped by Gender and Ethnicity

Notes:

Cohorts are First time (student type F)

Full time (≥ 12 cr hr)

Degree Seeking (student level U)

Declared Degree BA or BS (Degree Code B* or 00*)

Exclude HS concurrent (admit type \neq HS)

On campus (regular term)

Prior to 2009, Hawaiian/Pacific Islander Ethnicities were coded as Asian/Pacific Islander.

Some students do not report gender or ethnicity, so totals for each group may not match.

Graduation Rates are based on students that were awarded BA/BS Degrees.

Six-year grad rate includes the four-year graduates.

Six-year grad rate includes the summer term following the sixth year.

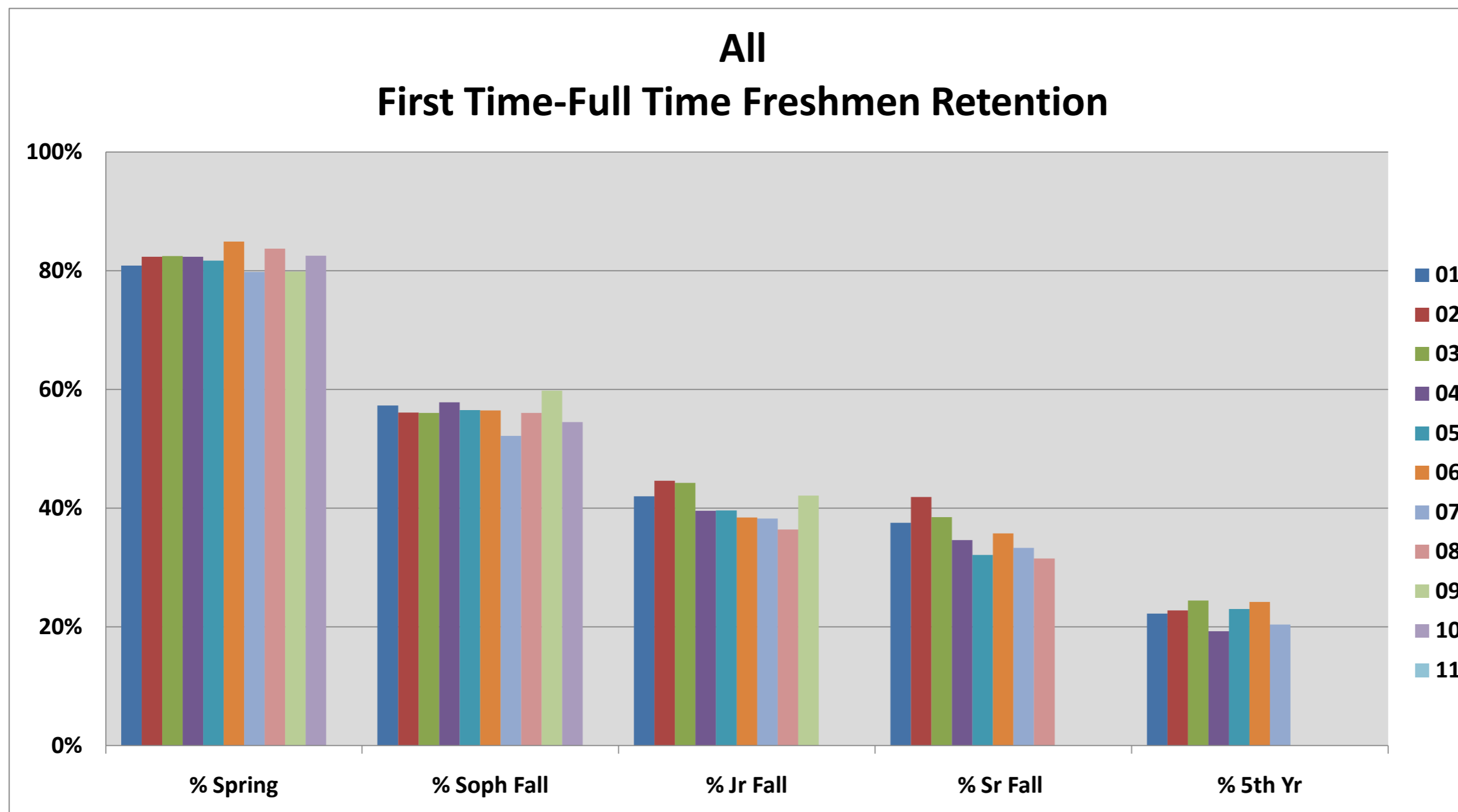
All data is based on the end of term.

Data source: ASC data warehouse

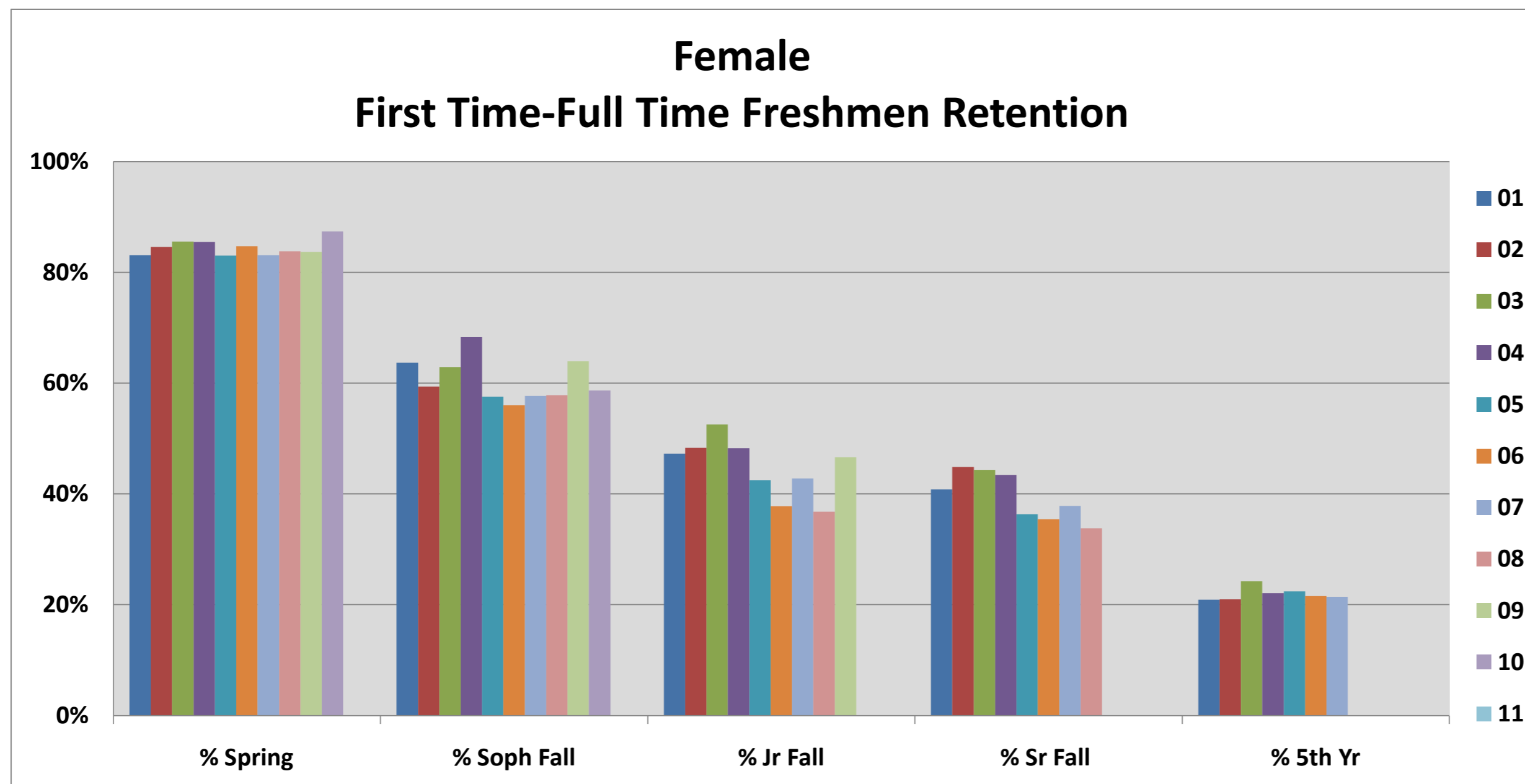
Files: *Persistence Study Access Database*

updated pab-9/11

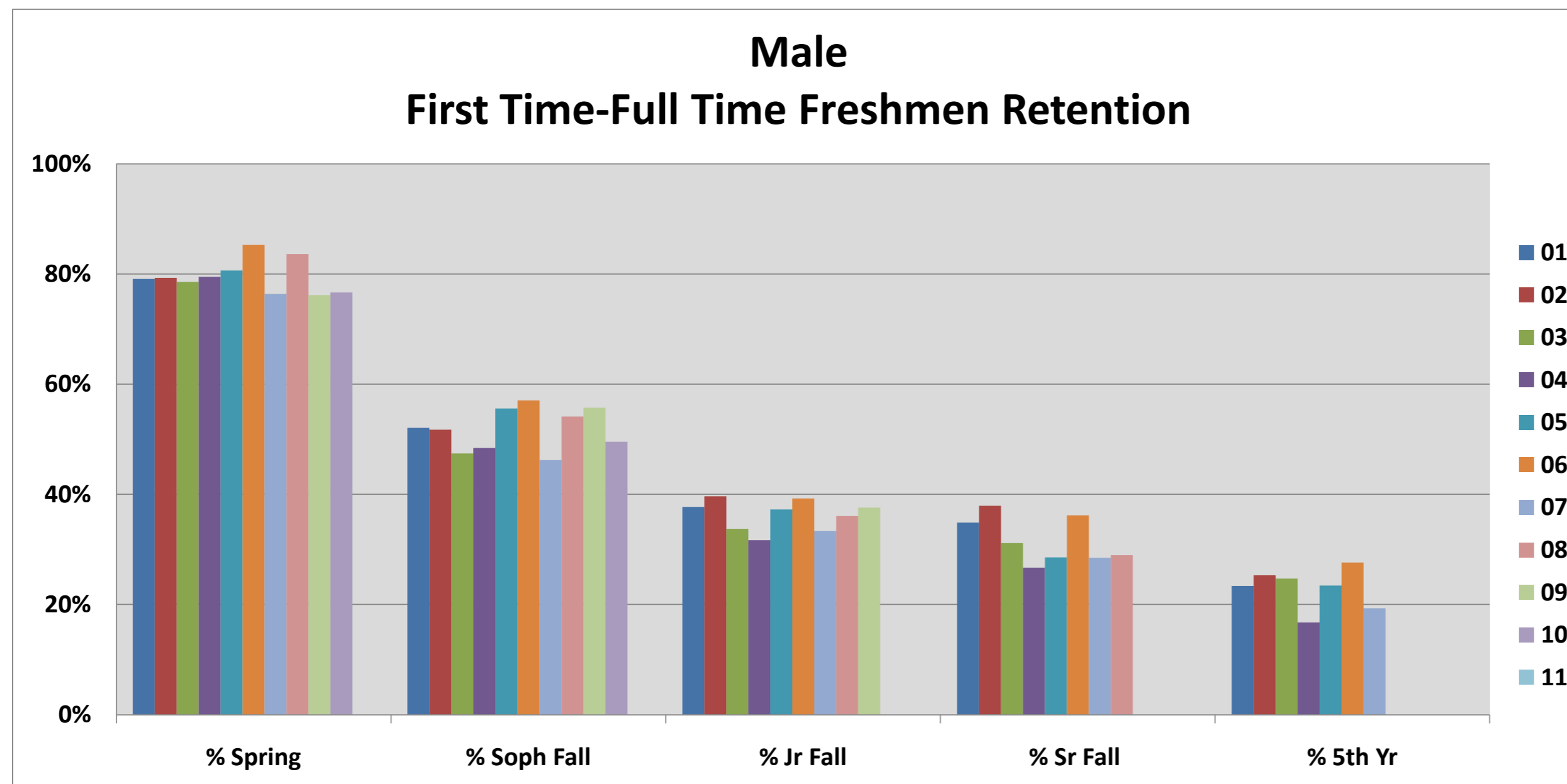
<u>Year</u>	<u>Entered Fall</u>	<u>Returned Spring</u>	<u>Returned Soph Fall</u>	<u>Returned Jr Fall</u>	<u>Returned SR Fall</u>	<u>Graduated 4 yr</u>	<u>4 yr grad rate</u>	<u>4 yr grad term</u>	<u>Returned 5 year</u>	<u>Graduated ASC</u>	<u>6 yr grad rate</u>	<u>6 yr grad term</u>
01	445	360	255	187	167	67	15.06%	200520	99	138	31.01%	200720
02	408	336	229	182	171	65	15.93%	200620	93	120	29.41%	200820
03	348	287	195	154	134	49	14.08%	200720	85	110	31.61%	200920
04	306	252	177	121	106	34	11.11%	200820	59	76	24.84%	201020
05	361	295	204	143	116	27	7.48%	200920	83	82	22.71%	201120
06	372	316	210	143	133	30	8.06%	201020	90		0.00%	201220
07	387	309	202	148	129	41	10.59%	201120	79		0.00%	201320
08	387	324	217	141	122		0.00%	201220			0.00%	201420
09	418	334	250	176			0.00%	201320			0.00%	201520
10	464	383	253				0.00%	201420			0.00%	201620
11	490						0.00%	201520			0.00%	201720
12							#DIV/0!	201620			#DIV/0!	201820
13							#DIV/0!	201720			#DIV/0!	201920
14							#DIV/0!	201820			#DIV/0!	202020
15							#DIV/0!	201920			#DIV/0!	202120



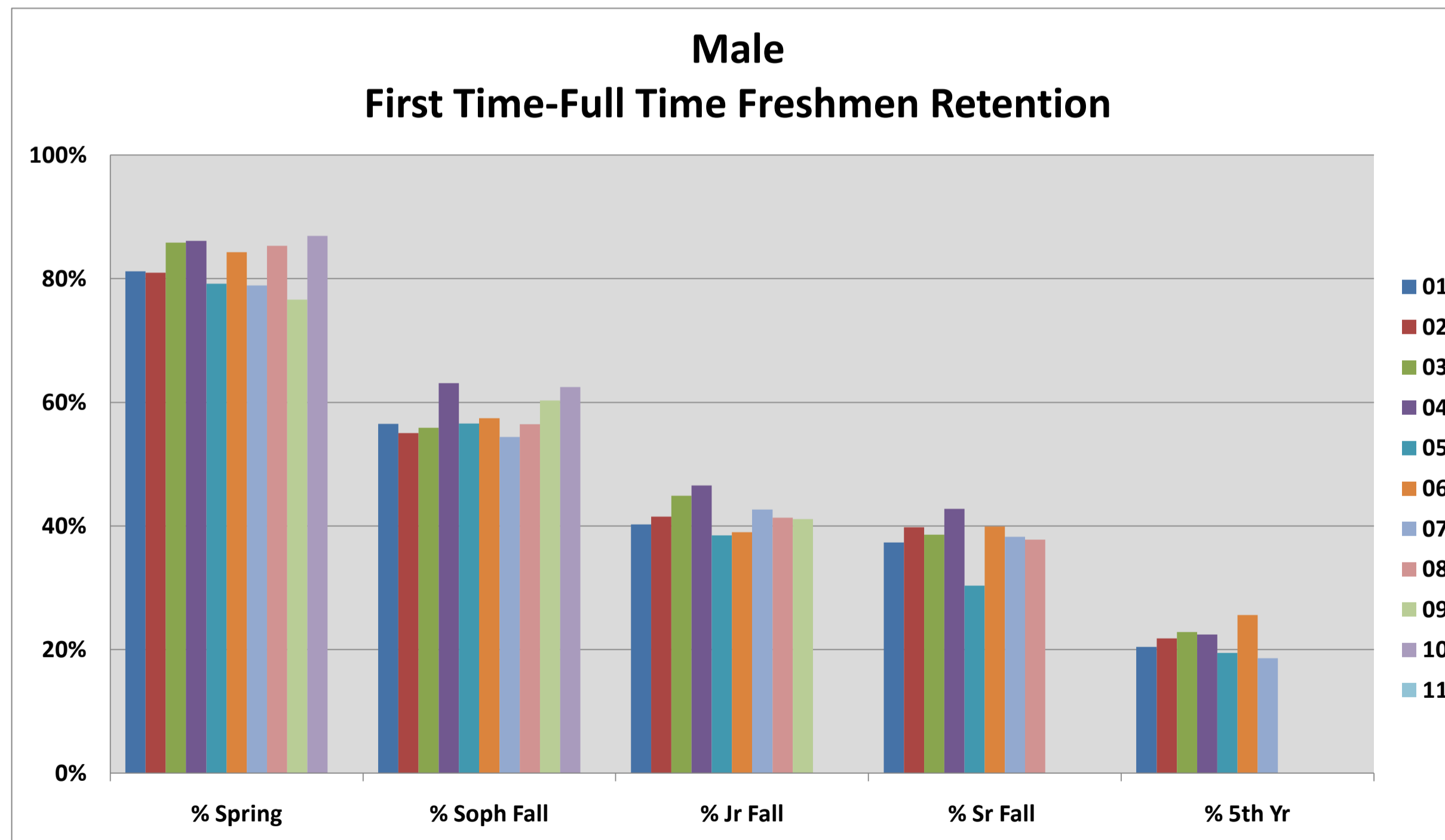
<u>Year</u>	<u>Entered Fall</u>	<u>Returned Spring</u>	<u>Returned Soph Fall</u>	<u>Returned Jr Fall</u>	<u>Returned SR Fall</u>	<u>Graduated 4 yr</u>	<u>4 yr grad rate</u>	<u>4 yr grad term</u>	<u>Returned 5 year</u>	<u>Graduated ASC</u>	<u>6 yr grad rate</u>	<u>6 yr grad term</u>
01	201	167	128	95	82	42	20.90%	200520	42	74	36.82%	200720
02	234	198	139	113	105	44	18.80%	200620	49	75	32.05%	200820
03	194	166	122	102	86	39	20.10%	200720	47	74	38.14%	200920
04	145	124	99	70	63	20	13.79%	200820	32	44	30.34%	201020
05	165	137	95	70	60	19	11.52%	200920	37	45	27.27%	201120
06	209	177	117	79	74	18	8.61%	201020	45		0.00%	201220
07	201	167	116	86	76	28	13.93%	201120	43		0.00%	201320
08	204	171	118	75	69		0.00%	201220			0.00%	201420
09	208	174	133	97			0.00%	201320			0.00%	201520
10	254	222	149				0.00%	201420			0.00%	201620
11	246						0.00%	201520			0.00%	201720
12								201620				201820
13								201720				201920
14								201820				202020
15								201920				202120



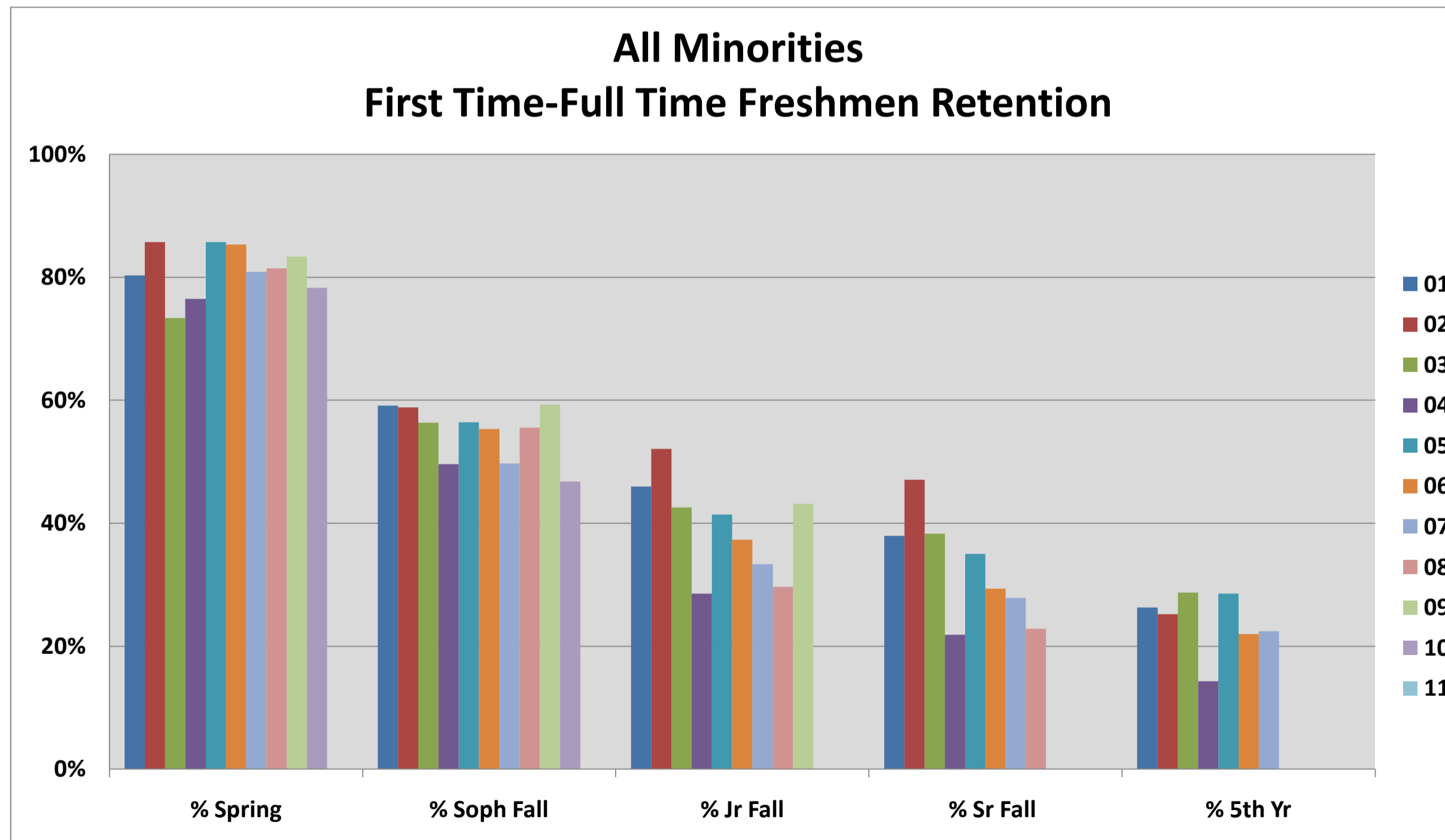
<u>Year</u>	<u>Entered Fall</u>	<u>Returned Spring</u>	<u>Returned Soph Fall</u>	<u>Returned Jr Fall</u>	<u>Returned SR Fall</u>	<u>Graduated 4 yr</u>	<u>4 yr grad rate</u>	<u>4 yr grad term</u>	<u>Returned 5 year</u>	<u>Graduated ASC</u>	<u>6 yr grad rate</u>	<u>6 yr grad term</u>
01	244	193	127	92	85	25	10.25%	200520	57	64	26.23%	200720
02	174	138	90	69	66	21	12.07%	200620	44	45	25.86%	200820
03	154	121	73	52	48	10	6.49%	200720	38	36	23.38%	200920
04	161	128	78	51	43	14	8.70%	200820	27	32	19.88%	201020
05	196	158	109	73	56	8	4.08%	200920	46	43	21.94%	201120
06	163	139	93	64	59	12	7.36%	201020	45		0.00%	201220
07	186	142	86	62	53	14	7.53%	201120	36		0.00%	201320
08	183	153	99	66	53		0.00%	201220			0.00%	201420
09	210	160	117	79			0.00%	201320			0.00%	201520
10	210	161	104				0.00%	201420			0.00%	201620
11	244						0.00%	201520			0.00%	201720
12								201620				201820
13								201720				201920
14								201820				202020
15								201920				202120



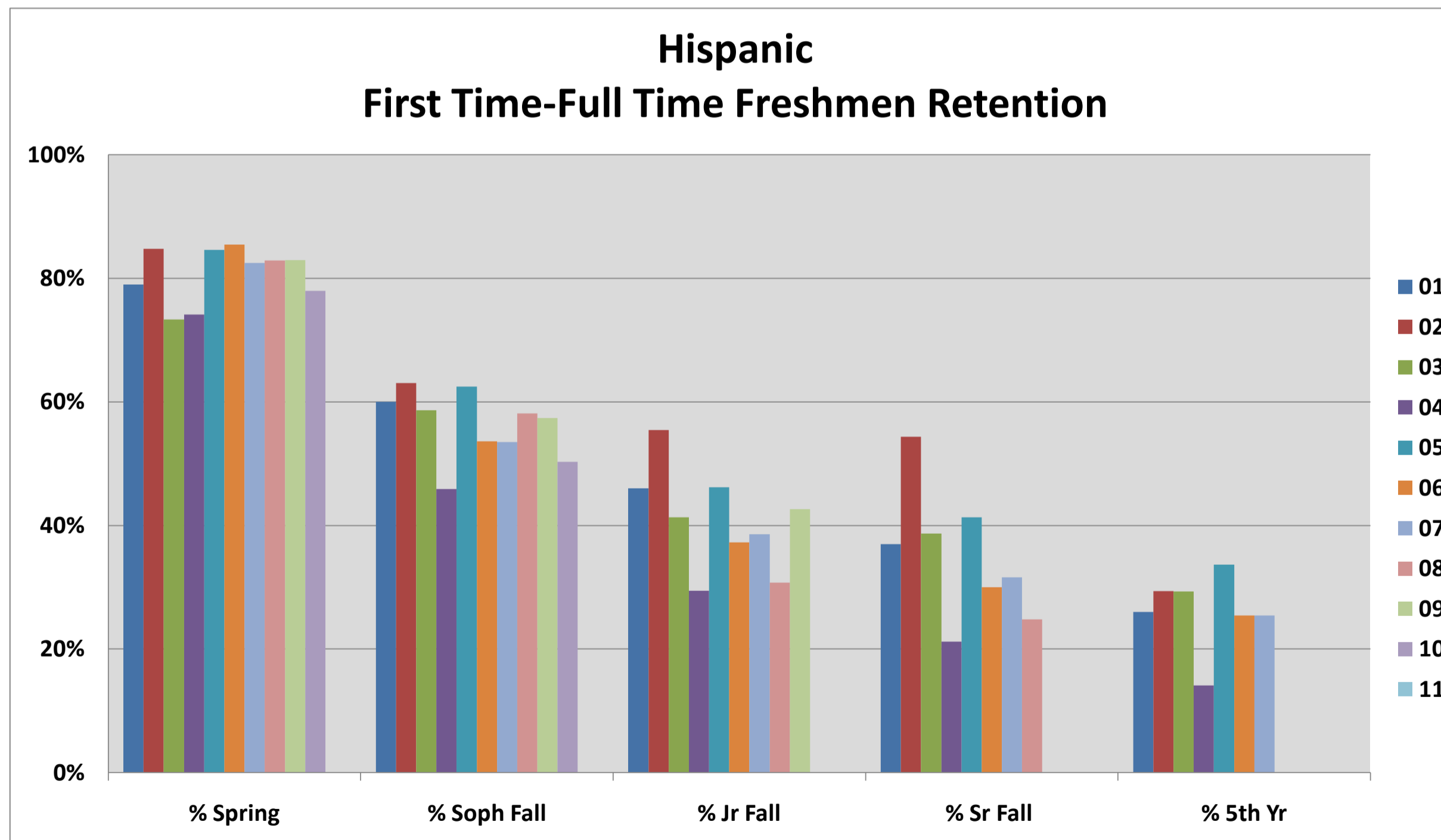
Year	Entered Fall	Returned Spring	Returned Soph Fall	Returned Jr Fall	Returned SR Fall	Graduated 4 yr	4 yr grad rate	4 yr grad term	Returned 5 year	Graduated ASC	6 yr grad rate	6 yr grad term
01	308	250	174	124	115	48	16%	200520	63	92	29.87%	200720
02	289	234	159	120	115	44	15%	200620	63	87	30.10%	200820
03	254	218	142	114	98	40	16%	200720	58	84	33.07%	200920
04	187	161	118	87	80	25	13%	200820	42	56	29.95%	201020
05	221	175	125	85	67	25	11%	200920	43	62	28.05%	201120
06	223	188	128	87	89	23	10%	201020	57		0.00%	201220
07	204	161	111	87	78	29	14%	201120	38		0.00%	201320
08	225	192	127	93	85		0%	201220			0.00%	201420
09	214	164	129	88			0%	201320			0.00%	201520
10	229	199	143				0%	201420			0.00%	201620
11	268						0%	201520			0.00%	201720
12							#DIV/0!	201620			#DIV/0!	201820
13							#DIV/0!	201720			#DIV/0!	201920
14							#DIV/0!	201820			#DIV/0!	202020
15							#DIV/0!	201920			#DIV/0!	202120



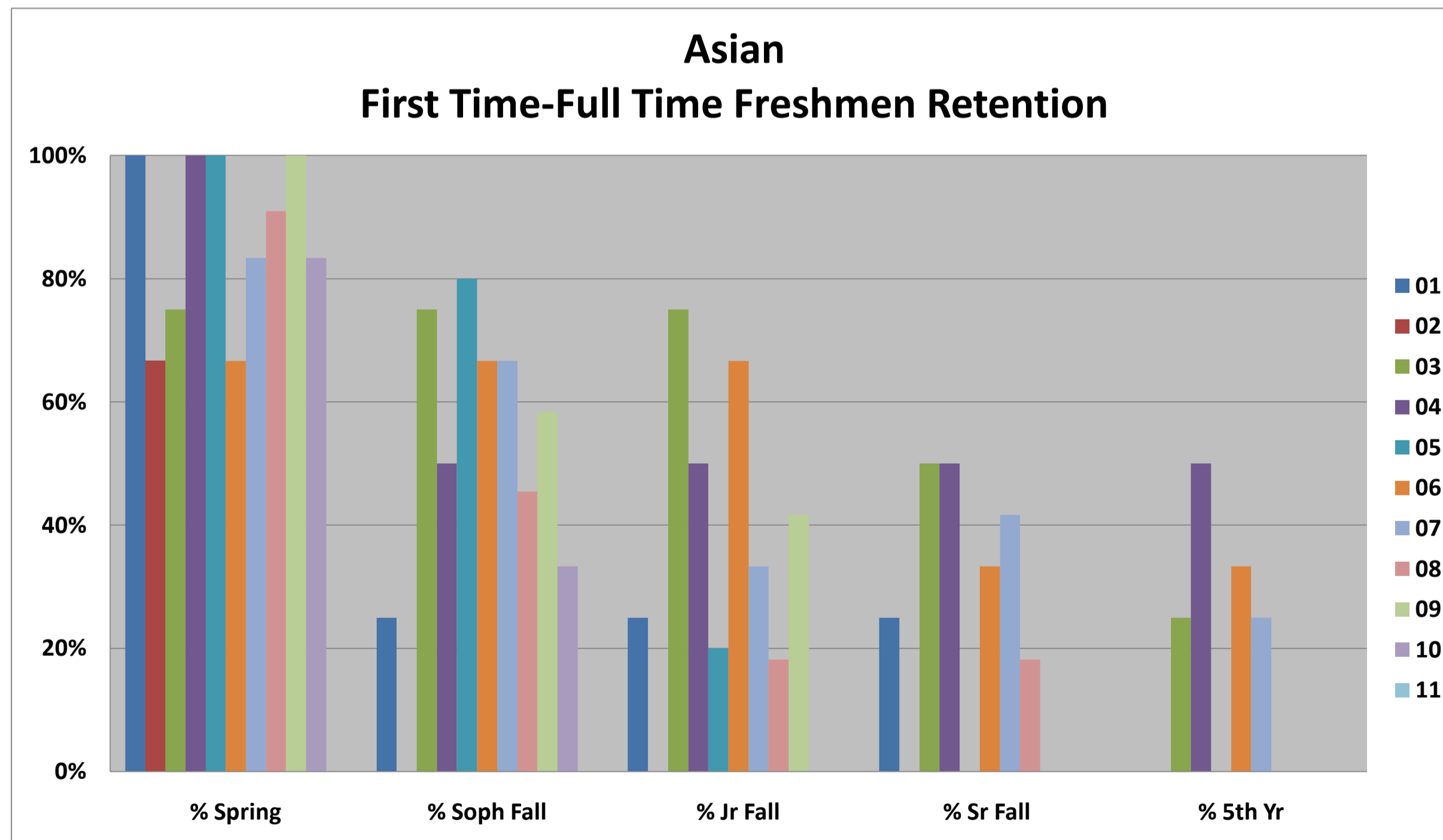
<u>Year</u>	<u>Entered Fall</u>	<u>Returned Spring</u>	<u>Returned Soph Fall</u>	<u>Returned Jr Fall</u>	<u>Returned SR Fall</u>	<u>Graduated 4 yr</u>	<u>4 yr grad rate</u>	<u>4 yr grad term</u>	<u>Returned 5 year</u>	<u>Graduated ASC</u>	<u>6 yr grad rate</u>	<u>6 yr grad term</u>
01	137	110	81	63	52	19	13.87%	200520	36	46	33.58%	200720
02	119	102	70	62	56	21	17.65%	200620	30	33	27.73%	200820
03	94	69	53	40	36	9	9.57%	200720	27	26	27.66%	200920
04	119	91	59	34	26	9	7.56%	200820	17	20	16.81%	201020
05	140	120	79	58	49	2	1.43%	200920	40	26	18.57%	201120
06	150	128	83	56	44	7	4.67%	201020	33		0.00%	201220
07	183	148	91	61	51	12	6.56%	201120	41		0.00%	201320
08	162	132	90	48	37		0.00%	201220			0.00%	201420
09	204	170	121	88			0.00%	201320			0.00%	201520
10	235	184	110				0.00%	201420			0.00%	201620
11	222						0.00%	201520			0.00%	201720
12							#DIV/0!	201620			#DIV/0!	201820
13							#DIV/0!	201720			#DIV/0!	201920
14							#DIV/0!	201820			#DIV/0!	202020
15							#DIV/0!	201920			#DIV/0!	202120



Year	Entered Fall	Returned Spring	Returned Soph Fall	Returned Jr Fall	Returned SR Fall	Graduated 4 yr	4 yr grad rate	4 yr grad term	Returned 5 year	Graduated ASC	6 yr grad rate	6 yr grad term
01	100	79	60	46	37	13	13.00%	200520	26	32	32.00%	200720
02	92	78	58	51	50	19	20.65%	200620	27	31	33.70%	200820
03	75	55	44	31	29	7	9.33%	200720	22	20	26.67%	200920
04	85	63	39	25	18	6	7.06%	200820	12	13	15.29%	201020
05	104	88	65	48	43	2	1.92%	200920	35	22	21.15%	201120
06	110	94	59	41	33	3	2.73%	201020	28		0.00%	201220
07	114	94	61	44	36	9	7.89%	201120	29		0.00%	201320
08	117	97	68	36	29		0.00%	201220			0.00%	201420
09	129	107	74	55			0.00%	201320			0.00%	201520
10	159	124	80				0.00%	201420			0.00%	201620
11	155						0.00%	201520			0.00%	201720
12							#DIV/0!	201620			#DIV/0!	201820
13							#DIV/0!	201720			#DIV/0!	201920
14							#DIV/0!	201820			#DIV/0!	202020
15							#DIV/0!	201920			#DIV/0!	202120

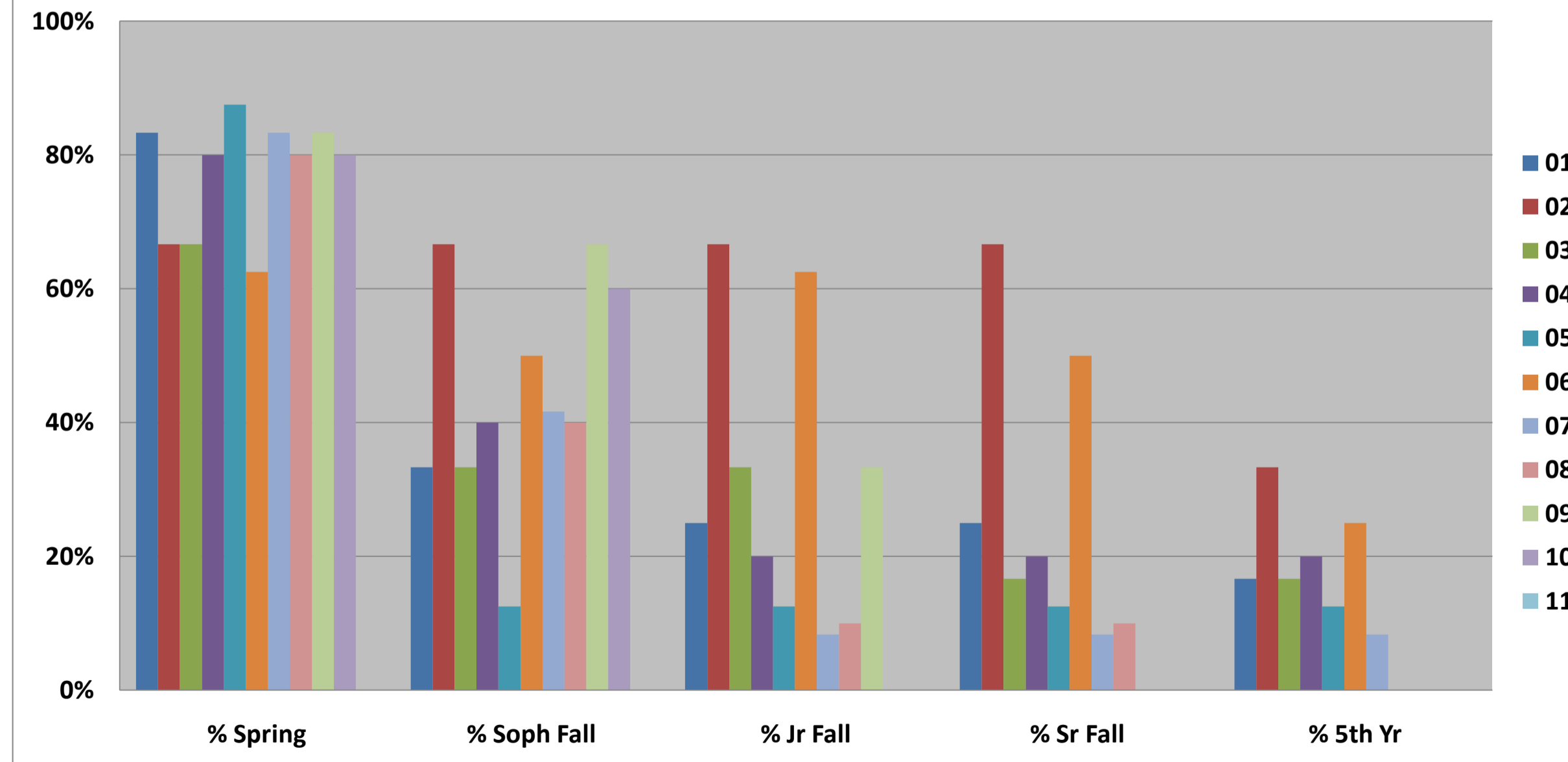


Year	Entered Fall	Returned Spring	Returned Soph Fall	Returned Jr Fall	Returned SR Fall	Graduated 4 yr	4 yr grad rate	4 yr grad term	Returned 5 year	Graduated ASC	6 yr grad rate	6 yr grad term
01	4	4	1	1	1	1	25.00%	200520	0	1	25.00%	200720
02	3	2	0	0	0	0	0.00%	200620	0	0	0.00%	200820
03	4	3	3	3	2	1	25.00%	200720	1	2	50.00%	200920
04	2	2	1	1	1	0	0.00%	200820	1	1	50.00%	201020
05	5	5	4	1	0	0	0.00%	200920	0	0	0.00%	201120
06	3	2	2	2	1	0	0.00%	201020	1		0.00%	201220
07	12	10	8	4	5	1	8.33%	201120	3		0.00%	201320
08	11	10	5	2	2		0.00%	201220			0.00%	201420
09	12	12	7	5			0.00%	201320			0.00%	201520
10	6	5	2				0.00%	201420			0.00%	201620
11	4						0.00%	201520			0.00%	201720
12							#DIV/0!	201620			#DIV/0!	201820
13							#DIV/0!	201720			#DIV/0!	201920
14							#DIV/0!	201820			#DIV/0!	202020
15							#DIV/0!	201920			#DIV/0!	202120

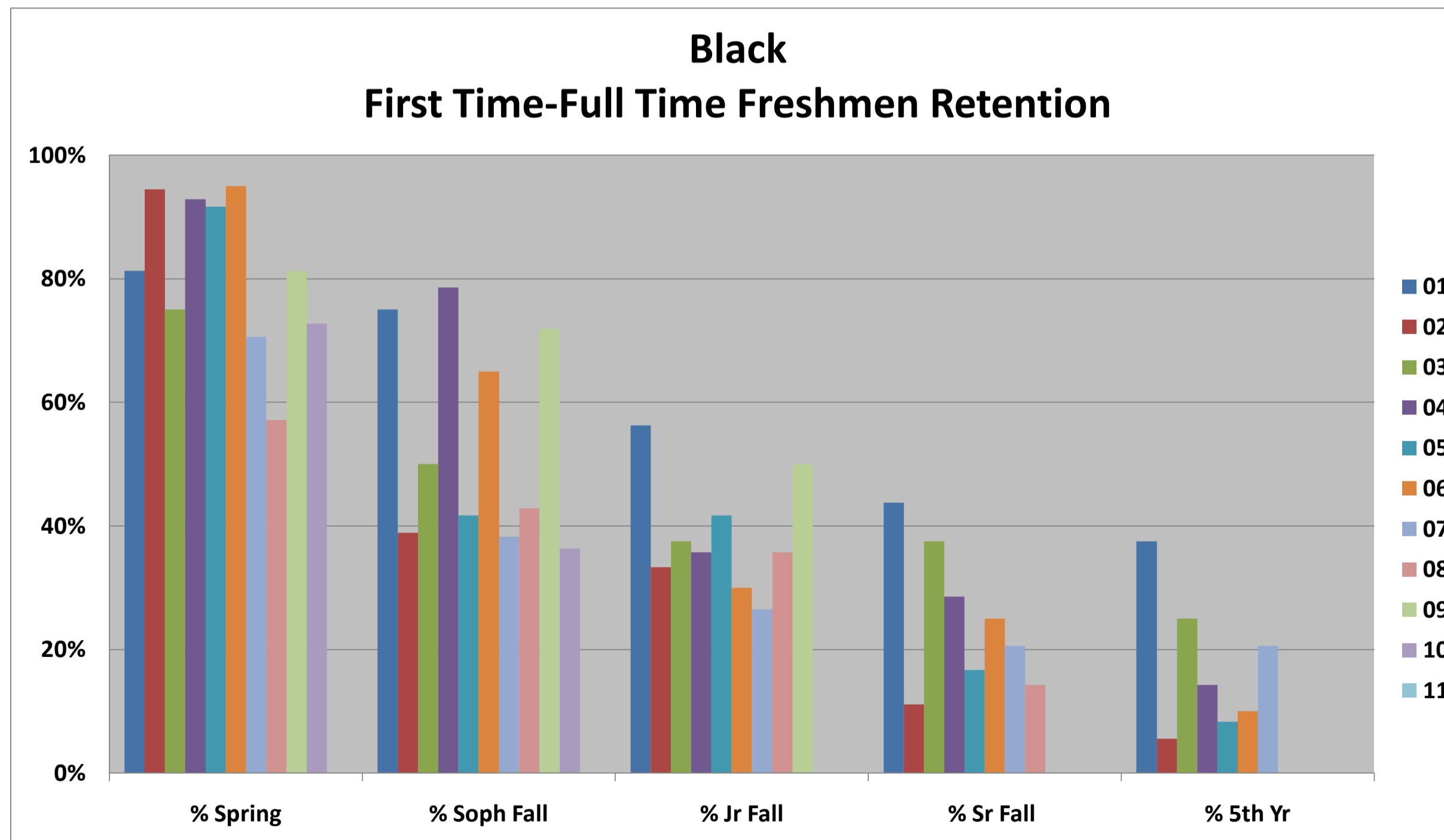


<u>Year</u>	<u>Entered Fall</u>	<u>Returned Spring</u>	<u>Returned Soph Fall</u>	<u>Returned Jr Fall</u>	<u>Returned SR Fall</u>	<u>Graduated 4 yr</u>	<u>4 yr grad rate</u>	<u>4 yr grad term</u>	<u>Returned 5 year</u>	<u>Graduated ASC</u>	<u>6 yr grad rate</u>	<u>6 yr grad term</u>
01	12	10	4	3	3	1	8.33%	200520	2	2	16.67%	200720
02	3	2	2	2	2	1	33.33%	200620	1	1	33.33%	200820
03	6	4	2	2	1	0	0.00%	200720	1	1	16.67%	200920
04	5	4	2	1	1	0	0.00%	200820	1	1	20.00%	201020
05	8	7	1	1	1	0	0.00%	200920	1	1	12.50%	201120
06	8	5	4	5	4	1	12.50%	201020	2		0.00%	201220
07	12	10	5	1	1	0	0.00%	201120	1		0.00%	201320
08	10	8	4	1	1		0.00%	201220			0.00%	201420
09	6	5	4	2			0.00%	201320			0.00%	201520
10	5	4	3				0.00%	201420			0.00%	201620
11							#DIV/0!	201520			#DIV/0!	201720
12							#DIV/0!	201620			#DIV/0!	201820
13							#DIV/0!	201720			#DIV/0!	201920
14							#DIV/0!	201820			#DIV/0!	202020
15							#DIV/0!	201920			#DIV/0!	202120

Native American First Time-Full Time Freshmen Retention

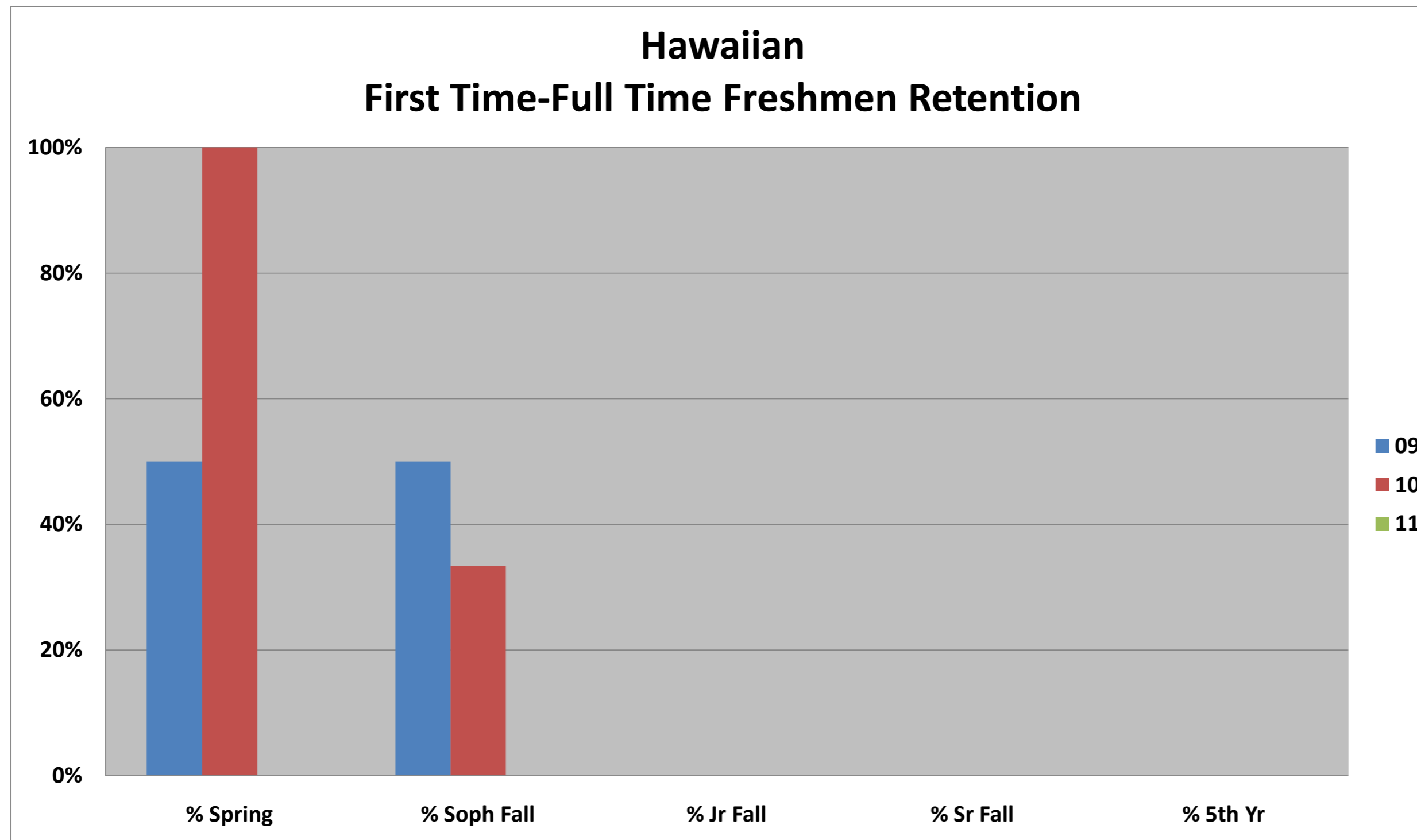


Year	Entered Fall	Returned Spring	Returned Soph Fall	Returned Jr Fall	Returned SR Fall	Graduated 4 yr	4 yr grad rate	4 yr grad term	Returned 5 year	Graduated ASC	6 yr grad rate	6 yr grad term
01	16	13	12	9	7	2	12.50%	200520	6	7	43.75%	200720
02	18	17	7	6	2	1	5.56%	200620	1	1	5.56%	200820
03	8	6	4	3	3	1	12.50%	200720	2	3	37.50%	200920
04	14	13	11	5	4	2	14.29%	200820	2	3	21.43%	201020
05	12	11	5	5	2	0	0.00%	200920	1	1	8.33%	201120
06	20	19	13	6	5	2	10.00%	201020	2		0.00%	201220
07	34	24	13	9	7	1	2.94%	201120	7		0.00%	201320
08	14	8	6	5	2		0.00%	201220			0.00%	201420
09	32	26	23	16			0.00%	201320			0.00%	201520
10	22	16	8				0.00%	201420			0.00%	201620
11	26						0.00%	201520			0.00%	201720
12							#DIV/0!	201620			#DIV/0!	201820
13							#DIV/0!	201720			#DIV/0!	201920
14							#DIV/0!	201820			#DIV/0!	202020
15							#DIV/0!	201920			#DIV/0!	202120



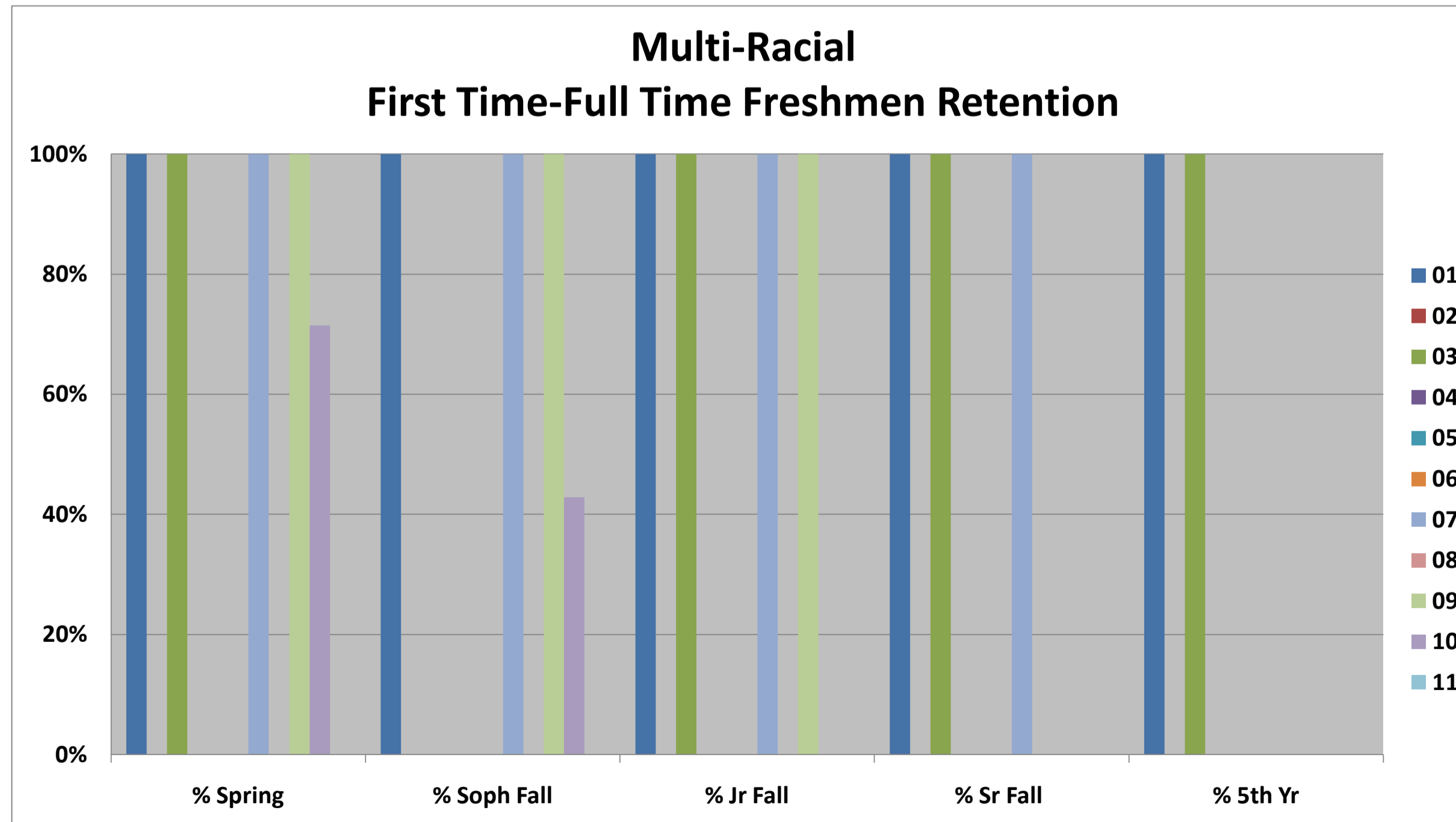
Prior to 2009, Hawaiian/Pacific Islander Ethnicities were coded as Asian/Pacific Islander.

<u>Year</u>	<u>Entered Fall</u>	<u>Returned Spring</u>	<u>Returned Soph Fall</u>	<u>Returned Jr Fall</u>	<u>Returned SR Fall</u>	<u>Graduated 4 yr</u>	<u>4 yr grad rate</u>	<u>4 yr grad term</u>	<u>Returned 5 year</u>	<u>Graduated ASC</u>	<u>6 yr grad rate</u>	<u>6 yr grad term</u>
09	2	1	1	0			0.00%	201320			0.00%	201520
10	3	3	1				0.00%	201420			0.00%	201620
11	3						0.00%	201520			0.00%	201720
12							#DIV/0!	201620			#DIV/0!	201820
13							#DIV/0!	201720			#DIV/0!	201920
14							#DIV/0!	201820			#DIV/0!	202020
15							#DIV/0!	201920			#DIV/0!	202120

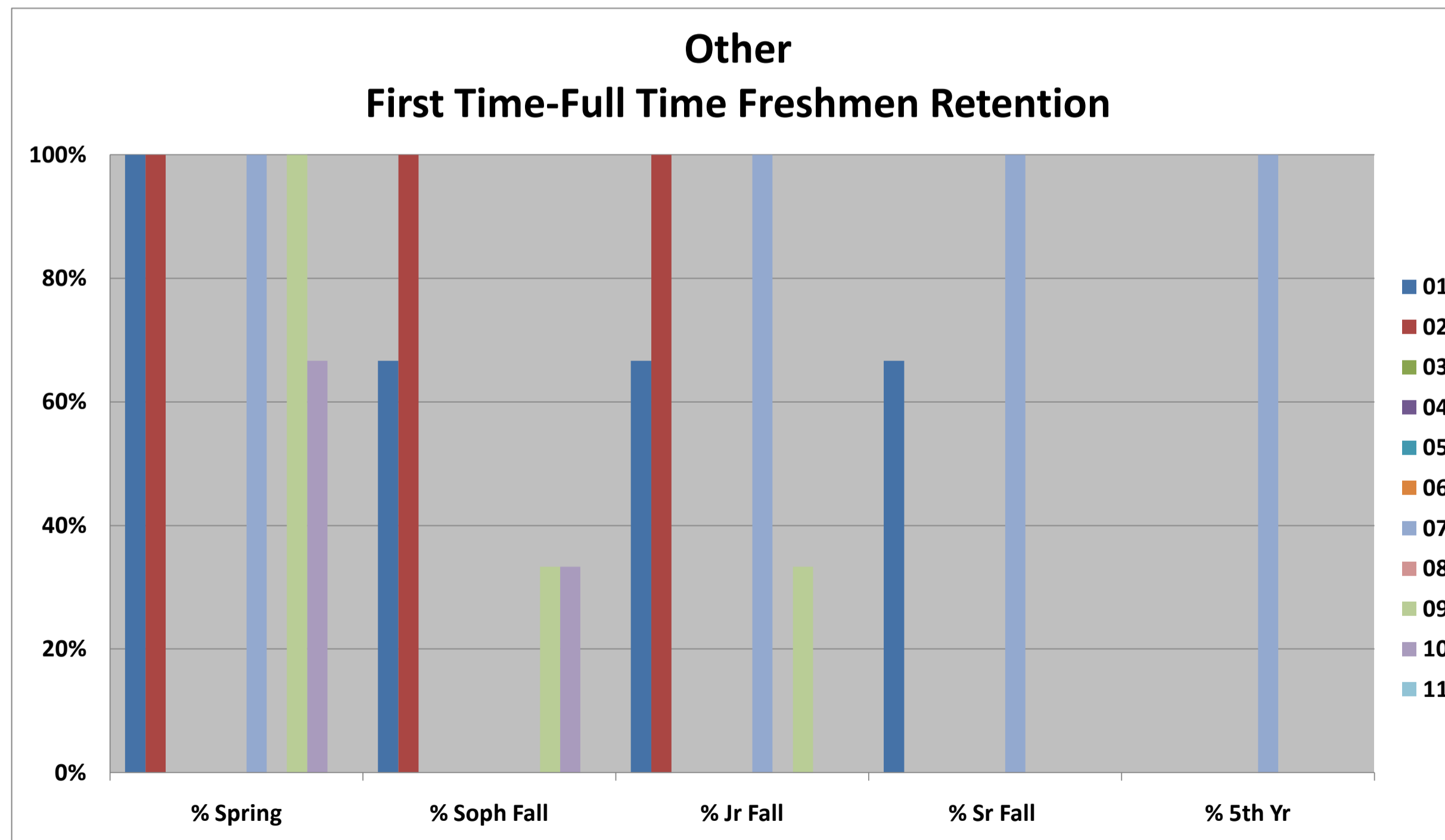


Prior to 2009, Multi-racial was not an ethnicity choice. Any earlier Multi-racial students were reclassified by the student after 2009.

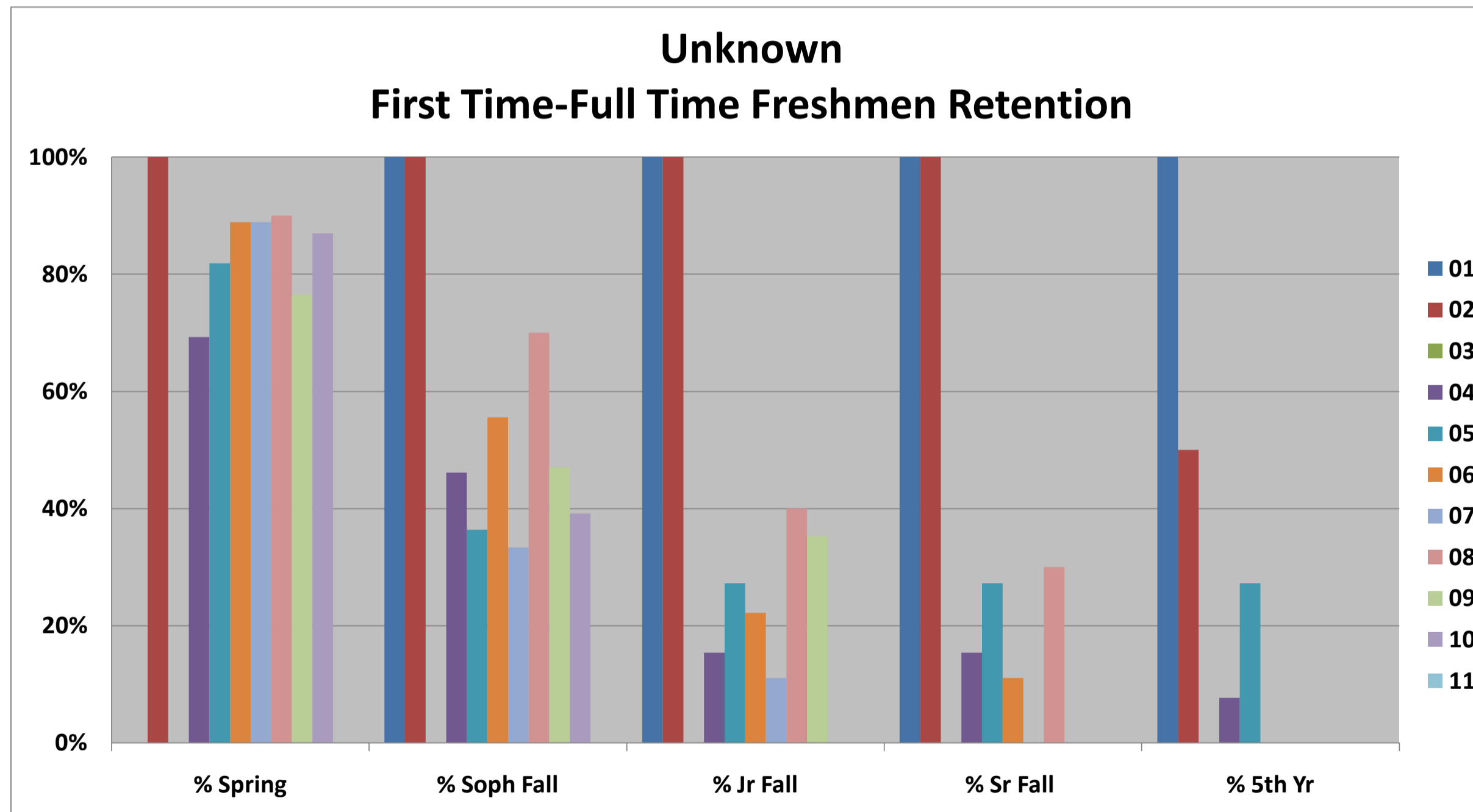
Year	Entered Fall	Returned Spring	Returned Soph Fall	Returned Jr Fall	Returned SR Fall	Graduated 4 yr	4 yr grad rate	4 yr grad term	Returned 5 year	Graduated ASC	6 yr grad rate	6 yr grad term
01	1	1	1	1	1	0	0.00%	200520	1	1	100.00%	200720
02	0	0	0	0	0	0	0.00%	200620	0	0	0.00%	200820
03	1	1	0	1	1	0	0.00%	200720	1	0	0.00%	200920
04	0	0	0	0	0	0	0.00%	200820	0	0	0.00%	201020
05	0	0	0	0	0	0	0.00%	200920	0	0	0.00%	201120
06	0	0	0	0	0	0	0.00%	201020	0	0	0.00%	201220
07	1	1	1	1	1	1	100.00%	201120	0	1	100.00%	201320
08	0	0	0	0	0	0	0.00%	201220	0	0	0.00%	201420
09	3	3	3	3			0.00%	201320			0.00%	201520
10	14	10	6				0.00%	201420			0.00%	201620
11	19						0.00%	201520			0.00%	201720
12							#DIV/0!	201620			#DIV/0!	201820
13							#DIV/0!	201720			#DIV/0!	201920
14							#DIV/0!	201820			#DIV/0!	202020
15							#DIV/0!	201920			#DIV/0!	202120



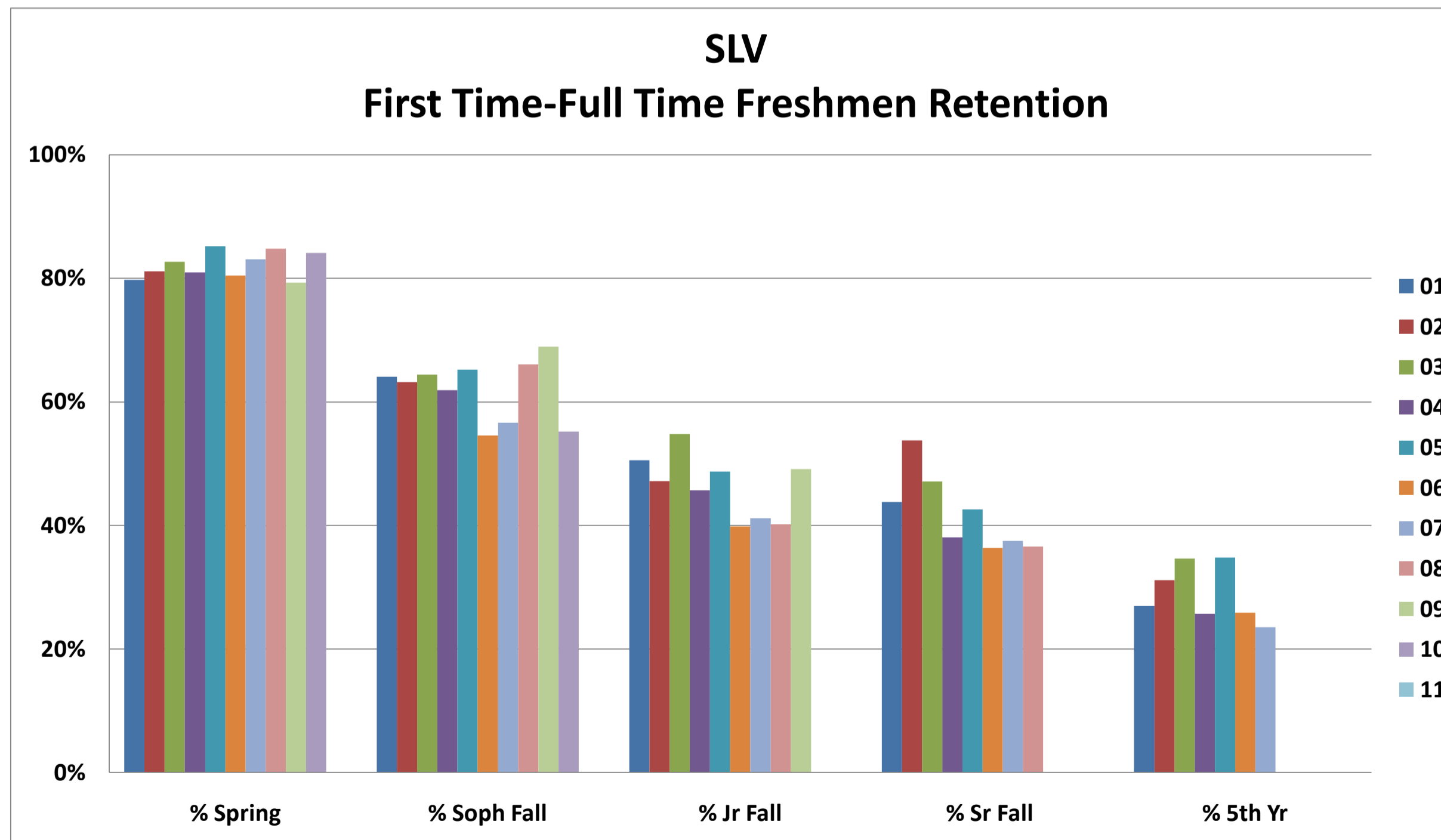
Year	Entered Fall	Returned Spring	Returned Soph Fall	Returned Jr Fall	Returned SR Fall	Graduated 4 yr	4 yr grad rate	4 yr grad term	Returned 5 year	Graduated ASC	6 yr grad rate	6 yr grad term
01	3	3	2	2	2	2	66.67%	200520	0	2	67%	200720
02	1	1	1	1	0	0	0.00%	200620	0	0	0%	200820
03	0	0	0	0	0	0	0.00%	200720	0	0	0%	200920
04	0	0	0	0	0	0	0.00%	200820	0	0	0%	201020
05	0	0	0	0	0	0	0.00%	200920	0	0	0%	201120
06	0	0	0	0	0	0	0.00%	201020	0	0	0%	201220
07	1	1	0	1	1	0	0.00%	201120	1	0	0%	201320
08	0	0	0	0	0	0	0.00%	201220	0	0	0%	201420
09	3	3	1	1			0.00%	201320			0%	201520
10	3	2	1				0.00%	201420			0%	201620
11	0						0.00%	201520			#DIV/0!	201720
12							#DIV/0!	201620			#DIV/0!	201820
13							#DIV/0!	201720			#DIV/0!	201920
14							#DIV/0!	201820			#DIV/0!	202020
15							#DIV/0!				#DIV/0!	202120



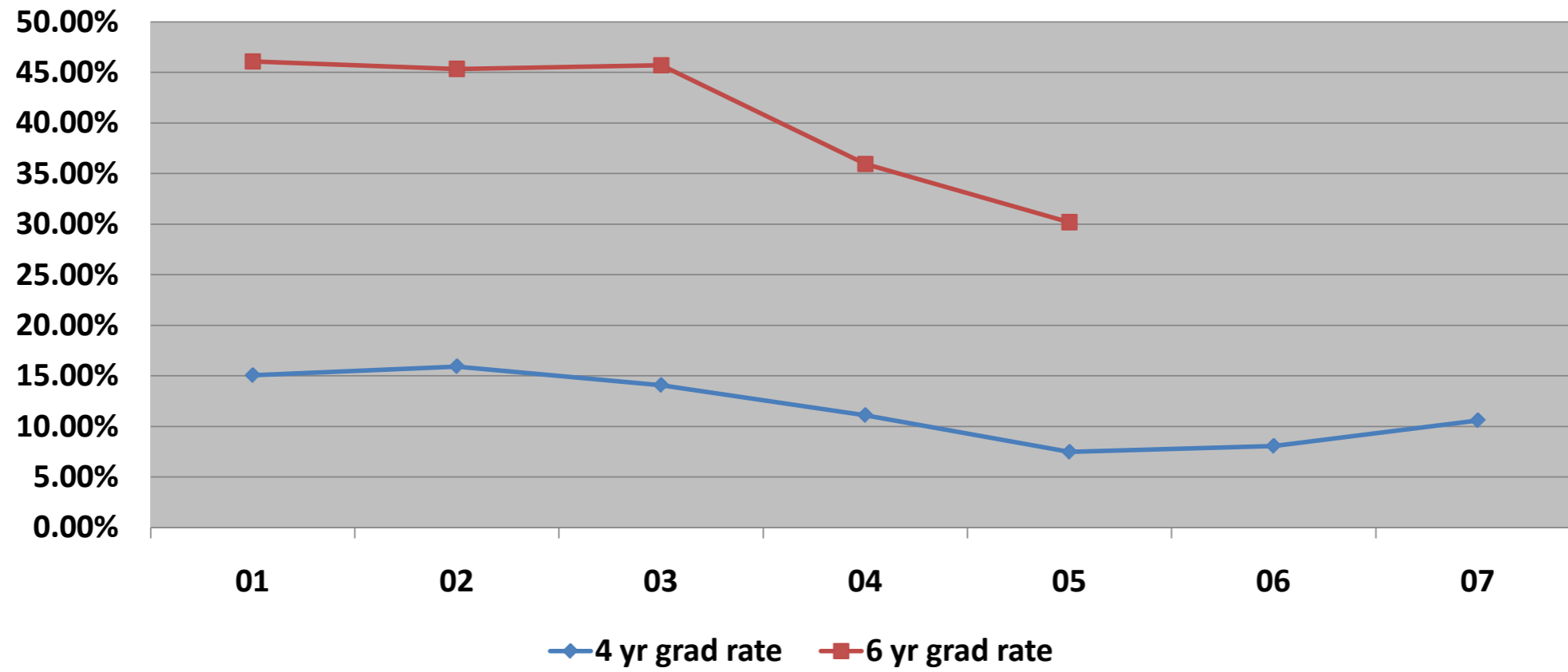
Year	Entered Fall	Returned Spring	Returned Soph Fall	Returned Jr Fall	Returned SR Fall	Graduated 4 yr	4 yr grad rate	4 yr grad term	Returned 5 year	Graduated ASC	6 yr grad rate	6 yr grad term
01	1	0	1	1	1	0	0.00%	200520	1	1	100.00%	200720
02	2	2	2	2	2	0	0.00%	200620	1	0	0.00%	200820
03	0	0	0	0	0	0	0.00%	200720	0	0	0.00%	200920
04	13	9	6	2	2	1	7.69%	200820	1	2	15.38%	201020
05	11	9	4	3	3	0	0.00%	200920	3	2	18.18%	201120
06	9	8	5	2	1	1	11.11%	201020	0		0.00%	201220
07	9	8	3	1	0	0	0.00%	201120	0		0.00%	201320
08	10	9	7	4	3		0.00%	201220			0.00%	201420
09	17	13	8	6			0.00%	201320			0.00%	201520
10	23	20	9				0.00%	201420			0.00%	201620
11	10						0.00%	201520			0.00%	201720
12							#DIV/0!	201620			#DIV/0!	201820
13							#DIV/0!	201720			#DIV/0!	201920
14							#DIV/0!	201820			#DIV/0!	202020
15												202120



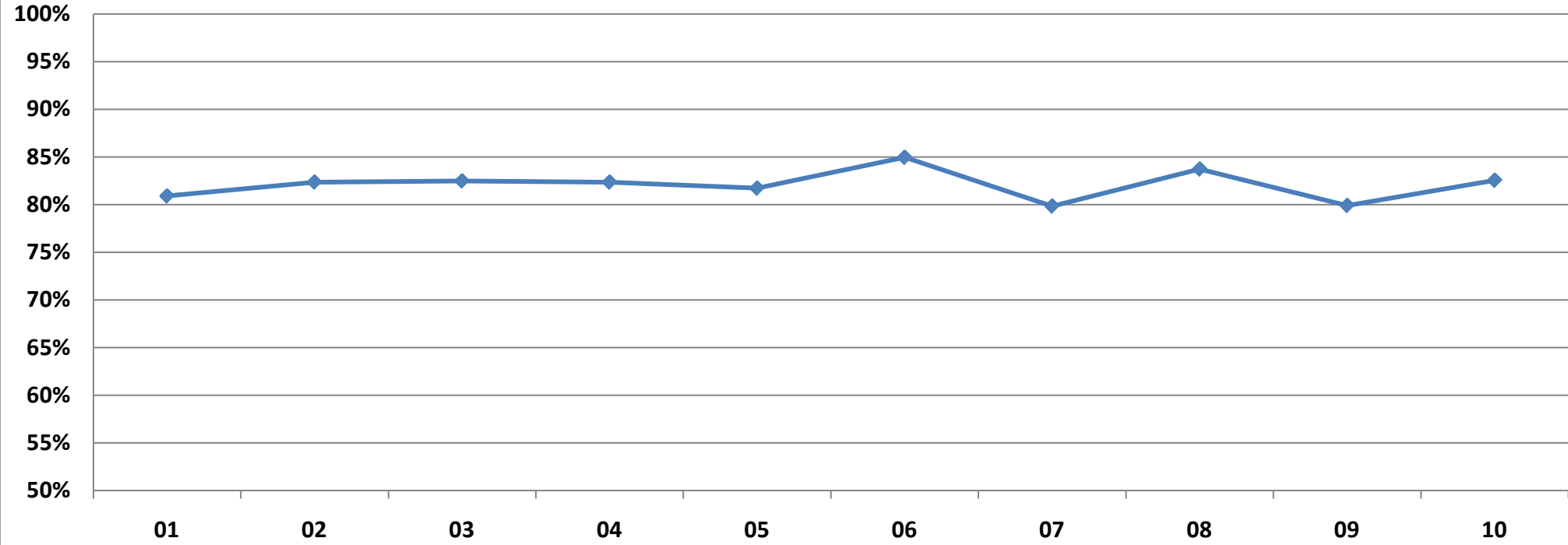
<u>Year</u>	<u>Entered Fall</u>	<u>Returned Spring</u>	<u>Returned Soph Fall</u>	<u>Returned Jr Fall</u>	<u>Returned SR Fall</u>	<u>Graduated 4 yr</u>	<u>4 yr grad rate</u>	<u>4 yr grad term</u>	<u>Returned 5 year</u>	<u>Graduated ASC</u>	<u>6 yr grad rate</u>	<u>6 yr grad term</u>
01	89	71	57	45	39	13	14.61%	200520	24	26	29.21%	200720
02	106	86	67	50	57	16	15.09%	200620	33	29	27.36%	200820
03	104	86	67	57	49	14	13.46%	200720	36	37	35.58%	200920
04	105	85	65	48	40	9	8.57%	200820	27	20	19.05%	201020
05	115	98	75	56	49	6	5.22%	200920	40	37	32.17%	201120
06	143	115	78	57	52	8	5.59%	201020	37		0.00%	201220
07	136	113	77	56	51	12	8.82%	201120	32		0.00%	201320
08	112	95	74	45	41		0.00%	201220			0.00%	201420
09	116	92	80	57			0.00%	201320			0.00%	201520
10	145	122	80				0.00%	201420			0.00%	201620
11	144						0.00%	201520			0.00%	201720
12							#DIV/0!	201620			#DIV/0!	201820
13							#DIV/0!	201720			#DIV/0!	201920
14							#DIV/0!	201820			#DIV/0!	202020
15											#DIV/0!	202120



Graduation Rates for First-Time Full-Time Freshman



% of Fall First Time-Full Time Freshmen Who Returned Spring Term



Avg fresh - sen retention

