

ASC Persistence Study

Grouped by Gender and Ethnicity

Notes:

Cohorts are First time (student type F)

Full time (≥ 12 cr hr)

Degree Seeking (student level U)

Exclude HS concurrent (admit type \neq HS)

Some students do not report gender or ethnicity, so totals for each group may not match.

Six-year grad rate includes the summer term following the sixth year.

All data is based on the end of term.

Data source: ASC data warehouse

file

S:\instres\crystal reports\retention\retention.rpt

S:\instres\crystal reports\retention\retention-grad rate.rpt

S:\instres\crystal reports\retention\retention by AD countySLV.rpt

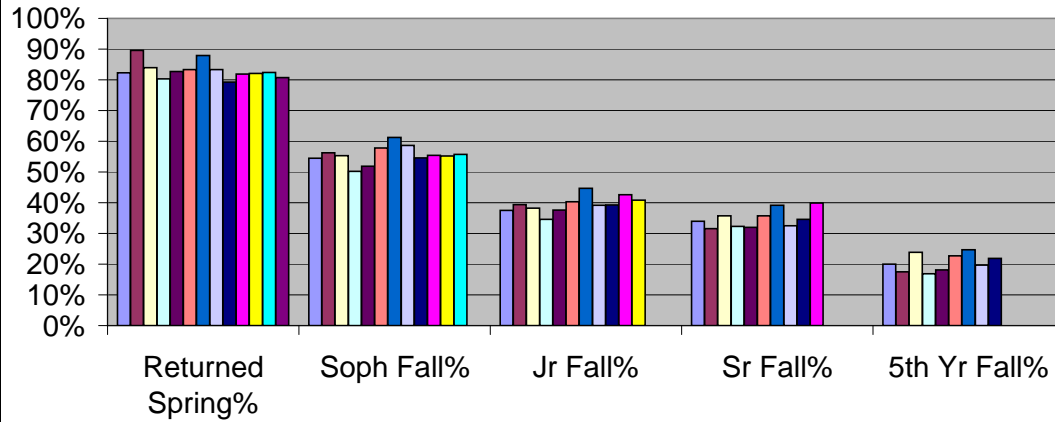
S:\instres\crystal reports\retention\grad rate by AD countySLV.rpt

S:\instres\longitudinal studies\persistence study 071806

updated pab-7/18/06

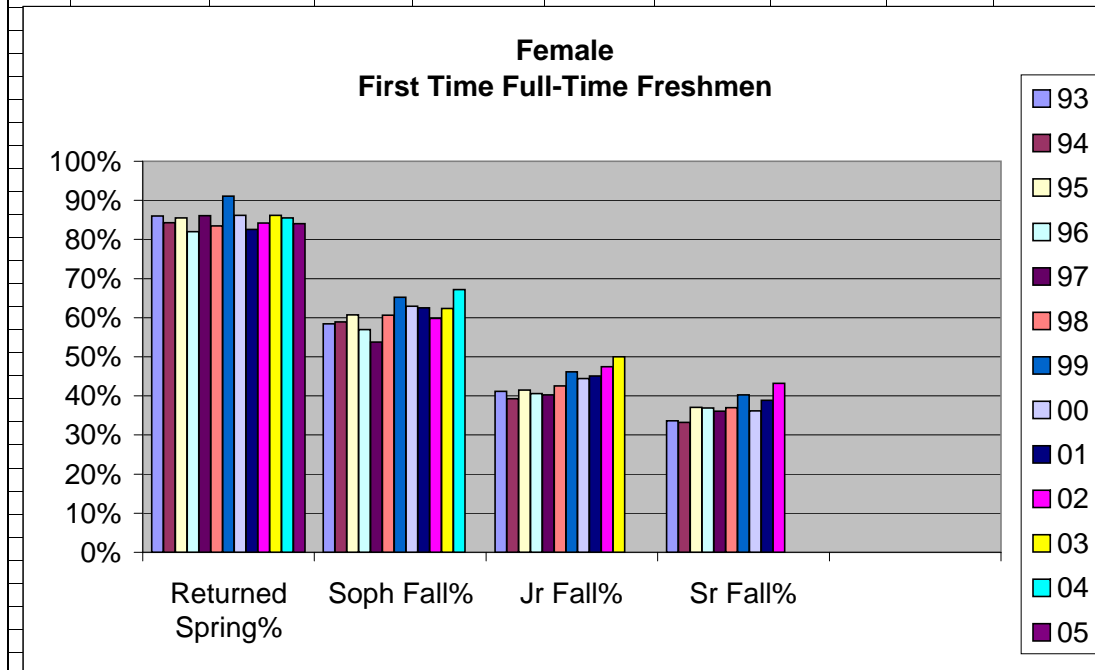
Year	Entered Fall	Returned Spring	Returned Soph Fa	Soph Fall%	Returned Jr Fal	Jr Fall%	Returned SR Fal	Sr Fall%	Graduated 4 yr	4 yr grad	Returned 5 y	5th Yr Fall%	Graduated A	6 yr grad	
93	424	349	82.31%	231	54.48%	159	37.50%	144	33.96%	50	11.79%	85	20%	112	26%
94	510	457	89.61%	287	56.27%	201	39.41%	161	31.57%	80	15.69%	89	17%	141	28%
95	512	430	83.98%	283	55.27%	196	38.28%	183	35.74%	64	12.50%	122	24%	155	30%
96	498	400	80.32%	250	50.20%	172	34.54%	161	32.33%	73	14.66%	84	17%	136	27%
97	463	383	82.72%	240	51.84%	174	37.58%	148	31.97%	67	14.47%	84	18%	133	29%
98	481	401	83.37%	278	57.80%	194	40.33%	172	35.76%	76	15.80%	109	23%	148	31%
99	465	409	87.96%	285	61.29%	208	44.73%	182	39.14%	60	12.90%	115	25%	143	31%
00	421	351	83.37%	247	58.67%	165	39.19%	137	32.54%	55	13.06%	83	20%	112	27%
01	520	412	79.23%	284	54.62%	204	39.23%	180	34.62%	76	14.62%	114	22%		0%
02	469	384	81.88%	260	55.44%	200	42.64%	187	39.87%		0.00%		0%		0%
03	402	330	82.09%	222	55.22%	164	40.80%		0.00%		0.00%		0%		0%
04	398	328	82.41%	222	55.78%		0.00%		0.00%		0.00%		0%		0%
05	473	382	80.76%		0.00%		0.00%		0.00%		0.00%		0%		0%
06	0	0	#DIV/0!		#DIV/0!		#DIV/0!		#DIV/0!		#DIV/0!		#DIV/0!		#DIV/0!
07	0	0	#DIV/0!		#DIV/0!		#DIV/0!		#DIV/0!		#DIV/0!		#DIV/0!		#DIV/0!
08	0	0	#DIV/0!		#DIV/0!		#DIV/0!		#DIV/0!		#DIV/0!		#DIV/0!		#DIV/0!
First time, full time (>=12), on campus, not HS conc, degree seeking															

All First Time-Full Time Freshmen Retention



Year	Entered Fall	Returned Spring	Returned Soph	Soph Fall%	Returned Jr F	Jr Fall%	Returned SR	Sr Fall%	Graduated 4 yr	4 yr grad	Returned 5	5th Yr Fall%	Graduated A	6 yr grad rate	
93	214	184	86%	125	58%	88	41%	72	34%	29	14%	41	19%	62	29%
94	280	236	84%	165	59%	110	39%	93	33%	54	19%	39	14%	83	30%
95	270	231	86%	164	61%	112	41%	100	37%	88	33%	61	23%	96	36%
96	244	200	82%	139	57%	99	41%	90	37%	47	19%	39	16%	87	36%
97	266	229	86%	143	54%	107	40%	96	36%	46	17%	41	15%	84	32%
98	254	212	83%	154	61%	108	43%	94	37%	45	18%	57	22%	82	32%
99	236	215	91%	154	65%	109	46%	95	40%	44	19%	51	22%	82	35%
00	232	200	86%	146	63%	103	44%	84	36%	44	19%	41	18%	79	34%
01	224	185	83%	140	63%	101	45%	87	39%	50	22%	49	22%		0%
02	259	218	84%	155	60%	123	47%	112	43%		0%		0%		0%
03	210	181	86%	131	62%	105	50%		0%		0%		0%		0%
04	180	154	86%	121	67%		0%		0%		0%		0%		0%
05	201	169	84%				0%		0%		0%		0%		0%

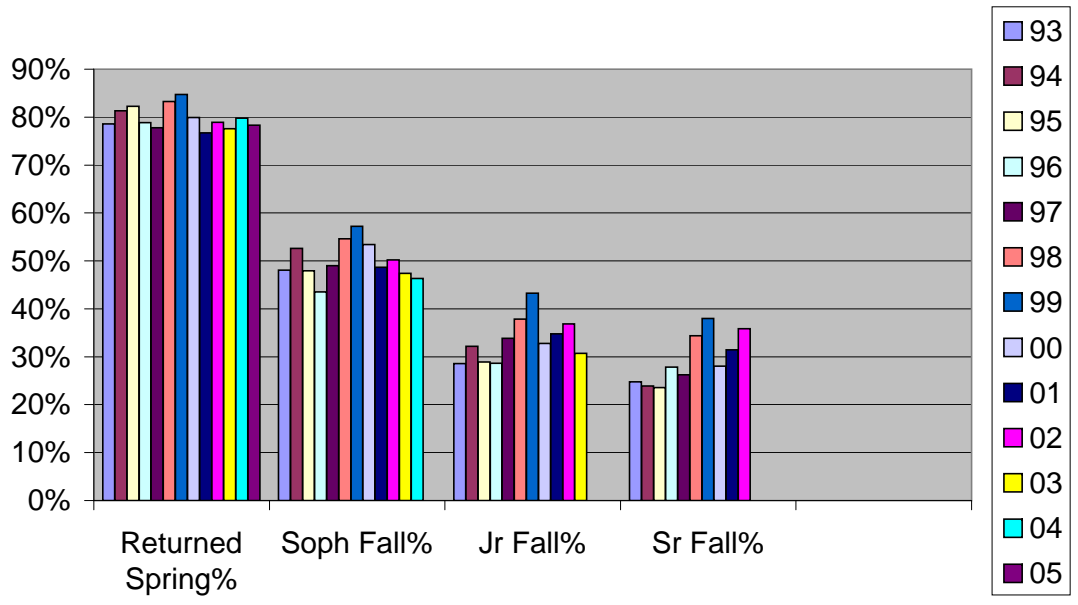
Female- First time, full time (>=12), on campus, not HS conc, degree seeking



Year	Entered Fall	Returned Spring	Returned Soph	Soph Fall%	Returned Jr	Jr Fall%	Returned SR	Sr Fall%	Graduated 4 yr	4 yr grad rate	Returned 5 yr	5th Yr Fall%	Graduated 6 yr	6 yr grad rate	
93	210	165	79%	101	48%	60	29%	52	25%	17	8%	28	13%	40	19%
94	230	187	81%	121	53%	74	32%	55	24%	18	8%	30	13%	46	20%
95	242	199	82%	116	48%	70	29%	57	24%	44	18%	35	14%	56	23%
96	255	201	79%	111	44%	73	29%	71	28%	26	10%	45	18%	60	24%
97	198	154	78%	97	49%	67	34%	52	26%	22	11%	32	16%	46	23%
98	227	189	83%	124	55%	86	38%	78	34%	31	14%	52	23%	66	29%
99	229	194	85%	131	57%	99	43%	87	38%	16	7%	65	28%	61	27%
00	189	151	80%	101	53%	62	33%	53	28%	11	6%	42	22%	33	17%
01	296	227	77%	144	49%	103	35%	93	31%	26	9%	65	22%		0%
02	209	165	79%	105	50%	77	37%	75	36%		0%		0%		0%
03	192	149	78%	91	47%	59	31%		0%		0%		0%		0%
04	218	174	80%	101	46%		0%		0%		0%		0%		0%
05	272	213	78%				0%		0%		0%		0%		0%

First time, full time (>=12), on campus, not HS conc, degree seeking

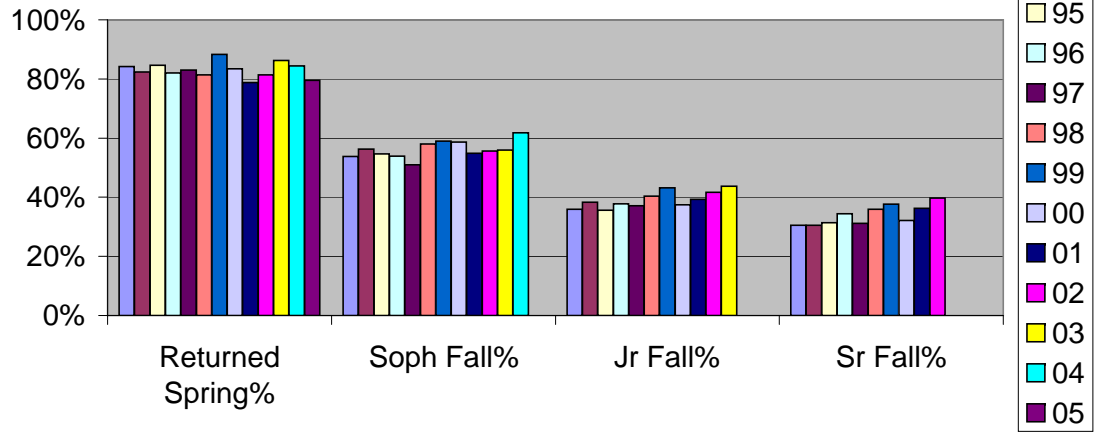
**Male
First Time-Full Time Freshmen Retention**



Year	Entered Fall	Returned Spring	Returned Soph	Soph Fall%	Returned Jr F	Jr Fall%	Returned SR I	Sr Fall%	Graduated	4 yr grad	Returned 5 y	5th Yr Fall%	Graduated A	6 yr grad rate
93	292	246	84%	157	54%	105	36%	89	30%	34	12%	50	76	26%
94	334	275	82%	188	56%	128	38%	102	31%	58	17%	42	94	28%
95	357	302	85%	195	55%	127	36%	112	31%	96	27%	69	111	31%
96	334	274	82%	180	54%	126	38%	115	34%	64	19%	60	106	32%
97	318	264	83%	162	51%	118	37%	99	31%	49	15%	54	88	28%
98	312	254	81%	181	58%	126	40%	112	36%	51	16%	71	100	32%
99	324	286	88%	191	59%	140	43%	122	38%	46	14%	80	121	37%
00	283	236	83%	166	59%	106	37%	91	32%	41	14%	50	81	29%
01	339	267	79%	186	55%	133	39%	123	36%	52	15%	73		0%
02	322	262	81%	179	56%	134	42%	128	40%		0%			0%
03	277	239	86%	155	56%	121	44%		0%		0%			0%
04	225	190	84%	139	62%		0%		0%		0%			0%
05	264	210	80%				0%		0%		0%			0%

First time, full time (>=12), on campus, not HS conc, degree seeking

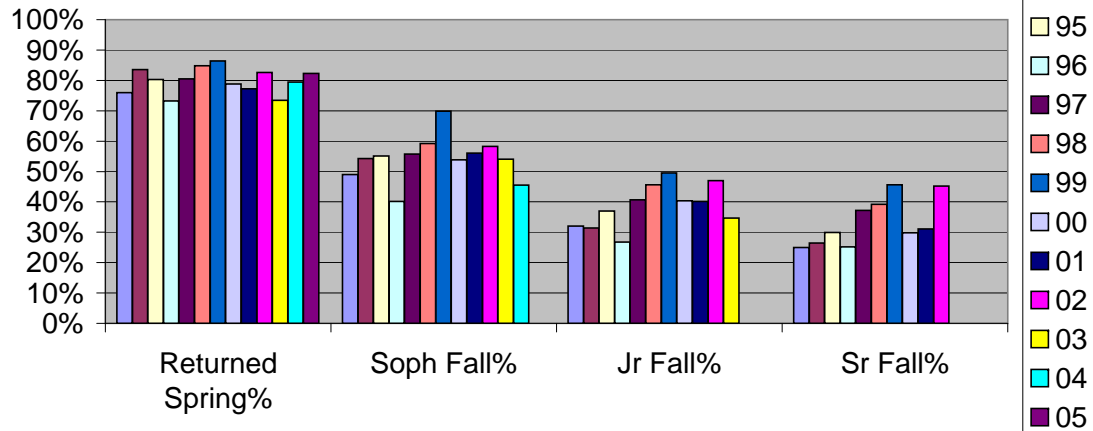
White
First Time-Full Time Freshmen Retention



Year	Entered Fall	Returned Spring	Returned Spring	Returned Soph	Soph Fall%	Returned Jr	Jr Fall%	Returned SR	Sr Fall%	Graduate	4 yr grad	returned 5 y	5th Yr Fall%	Graduated A	6 yr grad rate
93	100	76	76%	49	49%	32	32%	25	25%	7	7%	15	15%	17	17%
94	140	117	84%	76	54%	44	31%	37	26%	10	7%	23	16%	30	21%
95	127	102	80%	70	55%	47	37%	38	30%	32	25%	21	17%	35	28%
96	127	93	73%	51	40%	34	27%	32	25%	7	6%	17	13%	20	16%
97	113	91	81%	63	56%	46	41%	42	37%	22	19%	25	22%	34	30%
98	125	106	85%	74	59%	57	46%	49	39%	20	16%	31	25%	37	30%
99	103	89	86%	72	70%	51	50%	47	46%	12	12%	28	27%	28	27%
00	104	82	79%	56	54%	42	40%	31	30%	10	10%	23	22%	22	21%
01	132	102	77%	74	56%	53	40%	41	31%	16	12%	31	23%		0%
02	115	95	83%	67	58%	54	47%	52	45%		0%		0%		0%
03	98	72	73%	53	54%	34	35%		0%		0%		0%		0%
04	112	89	79%	51	46%		0%		0%		0%		0%		0%
05	141	116	82%				0%		0%		0%		0%		0%

First time, full time (>=12), on campus, not HS conc, degree seeking

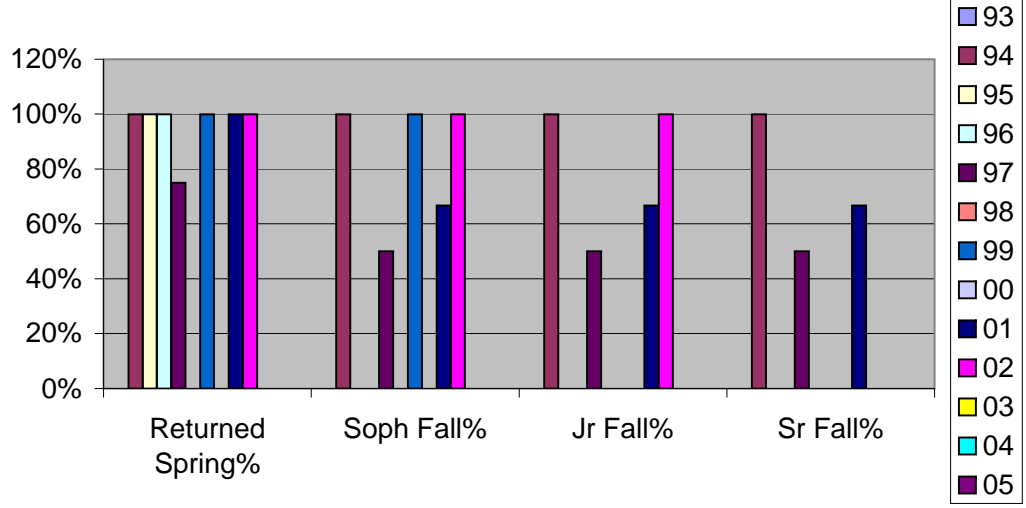
Hispanic First Time-Full Time Freshmen Retention



Year	Entered	Failed	Spurred	Spurred	Soph Fall%	Returned Jr	Jr Fall%	Returned SR	Sr Fall%	Graduated 4 yr	4 yr graduated	5th Yr Fall%	Graduated A	6 yr grad rate
93	0	0	#DIV/0!	0	#DIV/0!	0	#DIV/0!	0	#DIV/0!	0	#DIV/0!	0	#DIV/0!	#DIV/0!
94	1	1	100%	1	100%	1	100%	1	100%	1	100%	0	1	100%
95	1	1	100%	0	0%	0	0%	0	0%	0	0%	0	0	0%
96	2	2	100%	0	0%	0	0%	0	0%	0	0%	0	0	0%
97	4	3	75%	2	50%	2	50%	2	50%	1	25%	1	1	25%
98	0	0	#DIV/0!	0	#DIV/0!	0	#DIV/0!	0	#DIV/0!	0	#DIV/0!	0	#DIV/0!	#DIV/0!
99	1	1	100%	1	100%	0	0%	0	0%	0	0%			0%
00	0	0	#DIV/0!	0	#DIV/0!	0	#DIV/0!	0	#DIV/0!	0	#DIV/0!			#DIV/0!
01	3	3	100%	2	67%	2	67%	2	67%	1	33%			0%
02	1	1	100%	1	100%	1	100%		0%		0%			0%
03	0	0	#DIV/0!		#DIV/0!		#DIV/0!		#DIV/0!		#DIV/0!			#DIV/0!
04	0	0	#DIV/0!		#DIV/0!		#DIV/0!		#DIV/0!		#DIV/0!			#DIV/0!
05	0	0	#DIV/0!		#DIV/0!		#DIV/0!		#DIV/0!		#DIV/0!			#DIV/0!

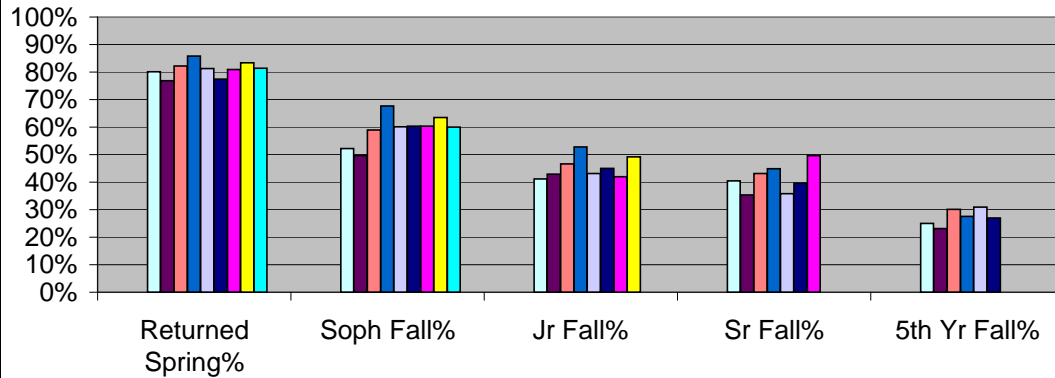
First time, full time (>=12), on campus, not HS conc, degree seeking

**Non-Resident Alien
First Time-Full Time Freshmen Retention**



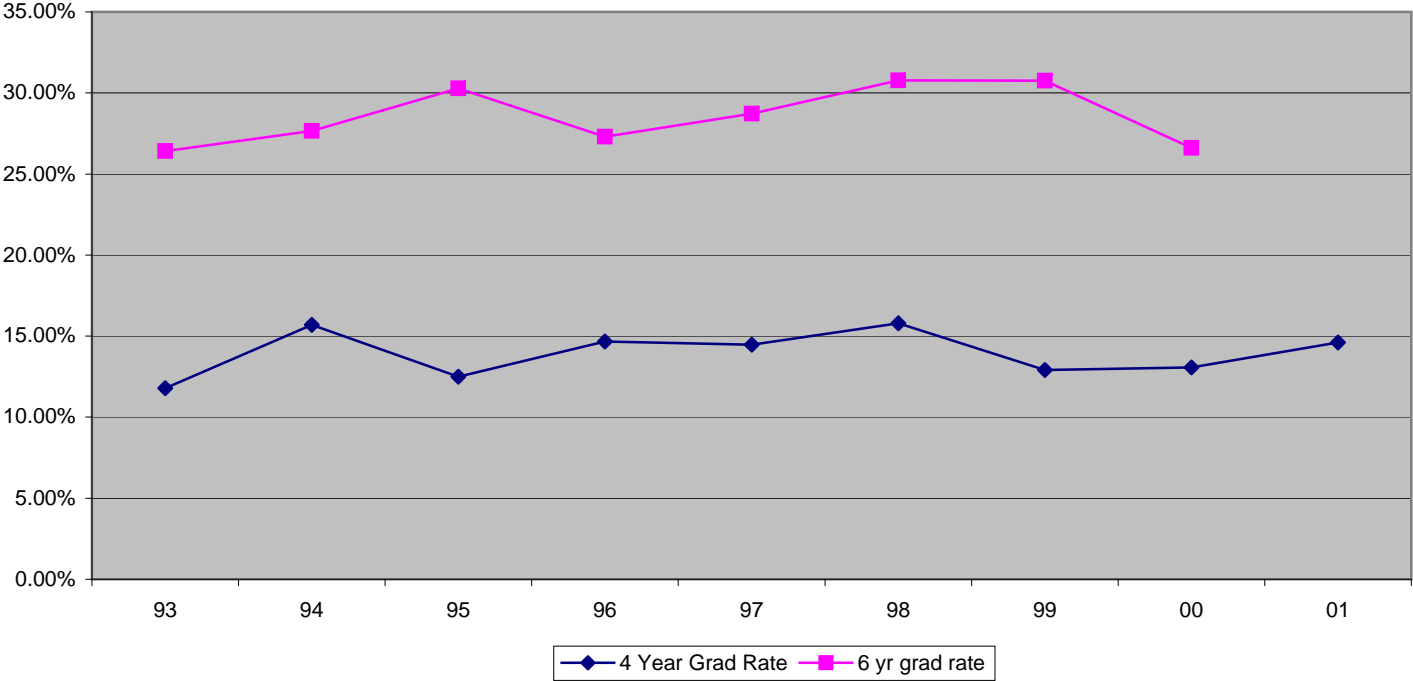
Year	Entered Fall	Returned Spring	Returned Soph Fa	Soph Fall%	Returned Jr Fal	Jr Fall%	Returned SR Fal	Sr Fall%	Graduated 4 yr	4 yr grad	Returned 5 y	5th Yr Fall%	Graduated A	6 yr grad
93			#DIV/0!		#DIV/0!		#DIV/0!		#DIV/0!		#DIV/0!		#DIV/0!	
94			#DIV/0!		#DIV/0!		#DIV/0!		#DIV/0!		#DIV/0!		#DIV/0!	
95			#DIV/0!		#DIV/0!		#DIV/0!		#DIV/0!		#DIV/0!		#DIV/0!	
96	136	109	80.15%	71	52.21%	56	41.18%	55	40.44%	19	13.97%	34	25%	39
97	147	113	76.87%	73	49.66%	63	42.86%	52	35.37%	20	13.61%	34	23%	40
98	146	120	82.19%	86	58.90%	68	46.58%	63	43.15%	21	14.38%	44	30%	45
99	127	109	85.83%	86	67.72%	67	52.76%	57	44.88%	19	14.96%	35	28%	41
00	123	100	81.30%	74	60.16%	53	43.09%	44	35.77%	9	7.32%	38	31%	0%
01	111	86	77.48%	67	60.36%	50	45.05%	44	39.64%	16	14.41%	30	27%	0%
02	131	106	80.92%	79	60.31%	55	41.98%	65	49.62%		0.00%		0%	0%
03	126	105	83.33%	80	63.49%	62	49.21%		0.00%		0.00%		0%	0%
04	145	118	81.38%	87	60.00%		0.00%		0.00%		0.00%		0%	0%
05	161	132	81.99%				0		0		0		0%	0%
First time, full time (>=12), on campus, not HS conc, degree seeking														

**SLV
First Time-Full Time Freshmen Retention**



- 93
- 94
- 95
- 96
- 97
- 98
- 99
- 00
- 01
- 02
- 03
- 04
- 05

Grad Rate
for First-Time Full-Time Freshmen cohort



**% of Fall
First Time-Full Time Freshmen
who Returned Spring Term**

